

## AbFlex<sup>®</sup> SMARCA1 / SNF2L1 antibody (rAb)

**Catalog Nos:** 91225, 91226

**RRID:** AB\_2793810

**Isotype:** IgG2a

**Application(s):** WB

**Reactivity:** Human

**Quantities:** 100 µg, 10 µg

**Purification:** Protein A Chromatography

**Host:** Mouse

**Concentration:** 1 µg/µl

**Molecular Weight:** 130 kDa

**Background:** AbFlex<sup>®</sup> antibodies are recombinant antibodies (rAbs) that have been generated using defined DNA sequences to produce highly specific, reproducible antibodies. Each AbFlex antibody contains a 6xHis Tag, a Biotinylation Tag for enzymatic biotin conjugation using the biotin ligase, BirA, and a sortase recognition motif (LPXTG) to attach a variety of labels directly to the antibody including fluorophores, enzymatic substrates (HRP, AP), peptides, drugs as well as solid supports. AbFlex<sup>®</sup> SMARCA1/SNF2L1 antibody was expressed as full-length IgG with mouse immunoglobulin heavy and light chains (IgG2a isotype) in mammalian 293 cells.

**SMARCA1 / SNF2L1** (Sucrose Nonfermenting 2-Like Protein 1) is an energy-transducing component of NURF (nucleosome-remodeling factor) and CERF (CECR2-containing-remodeling factor) complexes. Both complexes facilitate the perturbation of chromatin structure in an ATP-dependent manner. SMARCA1 / SNF2L1 is the mammalian ortholog of the *Drosophila* nucleosome-remodeling ATPase ISWI.

**Immunogen:** This antibody was raised against a recombinant protein encompassing amino acids 571 to 772 of human SNF2L (sucrose nonfermenting 2-like protein 1).

**Buffer:** Purified IgG in 140 mM HEPES, pH 7.5, 70 mM NaCl, 32 mM NaOAc, 0.035% sodium azide, 30% glycerol. Sodium azide is highly toxic.

### Application Notes:

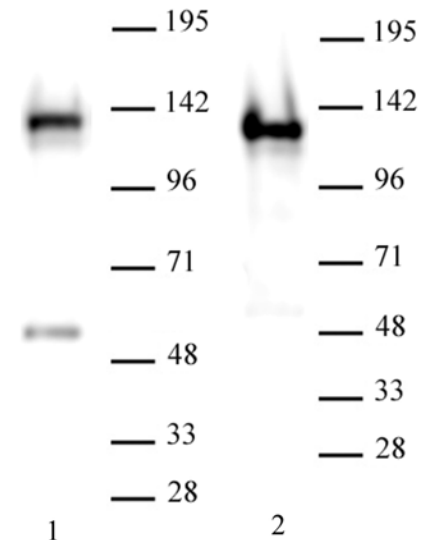
Applications Validated by Active Motif:

WB: 0.5 - 2 µg/ml

Note: For optimal results, we recommend the addition of 0.1% Tween 20 to all blocking solutions to reduce background. Individual optimization may be required.

AbFlex<sup>®</sup> recombinant antibodies are genetically derived from DNA sequences of parental hybridoma clones. For details on the parental clone, see Catalog No. 61465.

**Storage and Guarantee:** Some products may be shipped at room temperature. This will not affect their stability or performance. Avoid repeated freeze/thaw cycles by aliquoting items into single-use fractions for storage at -20°C for up to 2 years. Keep all reagents on ice when not in storage. This product is guaranteed for 12 months from date of receipt



AbFlex<sup>®</sup> SMARCA1 / SNF2L1 antibody (rAb) tested by Western blot. 30 µg of HeLa cell nuclear extract (Lane 1) or 20 µg of U87 glioblastoma cell nuclear extract (Lane 2) was run on SDS-PAGE and probed with AbFlex<sup>®</sup> SMARCA1 / SNF2L1 antibody at 2 µg/ml.