

## AbFlex<sup>®</sup> Suz12 antibody (rAb)

**Catalog Nos:** 91163, 91164

**Isotype:** IgG2a

**Application(s):** IP

**Reactivity:** Human

**Quantities:** 100 µg, 10 µg

**Purification:** Protein A Chromatography

**Host:** Mouse

**Concentration:** 1 µg/µl

**Molecular Weight:** 95 kDa

**Background:** AbFlex<sup>®</sup> antibodies are recombinant antibodies (rAbs) that have been generated using defined DNA sequences to produce highly specific, reproducible antibodies. Each AbFlex antibody contains a 6xHis Tag, a Biotinylation Tag for enzymatic biotin conjugation using the biotin ligase, BirA, and a sortase recognition motif (LPXTG) to attach a variety of labels directly to the antibody including fluorophores, enzymatic substrates (HRP, AP), peptides, drugs as well as solid supports. AbFlex<sup>®</sup> Suz12 antibody was expressed as full-length IgG with mouse immunoglobulin heavy and light chains (IgG2a isotype) in mammalian 293 cells.

Suz12 (Suppressor-of-Zeste 12 protein, also designated as ChET9, JJAZ1 protein) is a component of the Polycomb group complexes 2, 3 and 4 (PRC2, PRC3 and PRC4), which also contain the histone methyltransferase EZH2, EED (Embryonic Ectoderm Development protein) protein and the histone-binding proteins RbAP46 and RbAP48. PRC2 is responsible for di- and trimethylation of histone 3 at lysine 27 (Histone H3K27me2 and Histone H3K27me3), which leads to transcriptional repression of the target genes. Suz12 is a nuclear protein belonging to the VEFS family. Suz12 contains a zinc-finger binding motif and a VEFS box, which is required for the interaction between Suz12 and EZH2.

**Immunogen:** This antibody was raised against full length human SUZ12 (suppressor of zeste 12 homolog (Drosophila))

**Buffer:** 140 mM Hepes, pH 7.5, 70 mM NaCl, 32 mM NaOAc, 0.035% sodium azide, and 30% glycerol. Sodium azide is highly toxic.

### Application Notes:

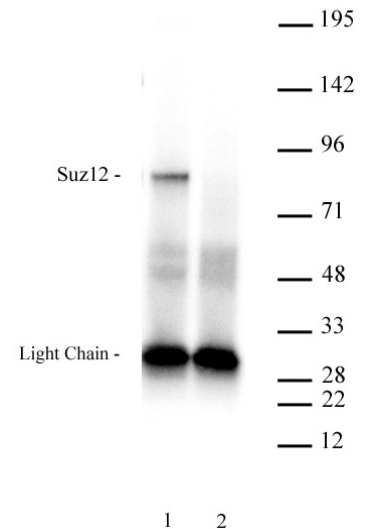
Applications Validated by Active Motif:

IP: 2 µg per IP

Note: For optimal results, we recommend a High Salt / Sonication Protocol when preparing nuclear extracts for detection of Suz12.

AbFlex<sup>®</sup> recombinant antibodies are genetically derived from DNA sequences of parental hybridoma clones. For details on the parental clone, see Catalog No. 39877.

**Storage and Guarantee:** Some products may be shipped at room temperature. This will not affect their stability or performance. Avoid repeated freeze/thaw cycles by aliquoting items into single-use fractions for storage at -20°C for up to 2 years. Keep all reagents on ice when not in storage. This product is guaranteed for 12



AbFlex<sup>®</sup> Suz12 antibody (rAb) tested by Immunoprecipitation  
300 µg of HeLa cell nuclear extract was immunoprecipitated with 5 µg of either AbFlex Suz12 antibody (Lane 1) or Mouse IgG (Lane 2). Immunoprecipitated proteins were run on SDS-PAGE and probed using a polyclonal antibody specific for Suz12 (Cat. No. 39357) at 2 µg/ml. On the gel, antibody heavy chains (50 kDa) and light chains (25 kDa) are visible.