

Recombinant METTL15 protein

Catalog No: 81084, 81784

Lot No: 30117001

Expressed In: Baculovirus

Quantity: 20, 1000 µg

Concentration: 0.2 µg/µl

Source: Human

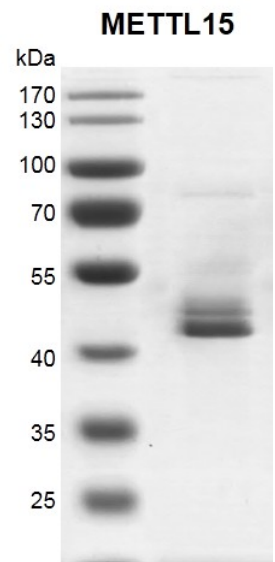
Buffer Contents: Recombinant METTL15 protein is supplied in 25 mM HEPES-NaOH pH 7.5, 300 mM NaCl, 10% glycerol, 0.04% Triton X-100 and 0.5 mM TCEP.

Background: METTL15 (Probable methyltransferase-like protein 15 isoform 1), also known as METT5D1, is a probable S-adenosyl-L-methionine-dependent methyltransferase. It has a type I restriction-modification system, DNA methylase subunit (HSdM) and a S-adenosyl-L-methionine binding site. METTL15 provisionally has 16S rRNA m(4)C1402 methyltransferase activity.

Protein Details: Recombinant human METTL15 protein was expressed in a baculovirus expression system as the full length protein (accession number NP_001107000.1) with a C-terminal FLAG tag. The molecular weight of the protein is 47.8 kDa.

Application Notes: This protein is suitable for use in binding assays, inhibitor screening, and selectivity profiling.

Storage and Guarantee: Recombinant proteins in solution are temperature sensitive and must be stored at -80°C to prevent degradation. Avoid repeated freeze/thaw cycles and keep on ice when not in storage. This product is for research use only and is not for use in diagnostic procedures. This product is guaranteed for 6 months from date of arrival.



Recombinant METTL15 protein gel
10% SDS-PAGE Coomassie staining
MW: 47.8 kDa
Purity: >60%