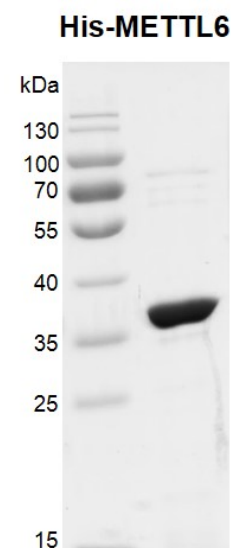


Recombinant METTL6 protein, His-Tag

Catalog No: 81060, 81760**Lot No:** 27317001**Expressed In:** *E. coli***Quantity:** 100, 1000 µg**Concentration:** 1.3 µg/µl**Source:** Human**Buffer Contents:** Recombinant METTL6 protein, His-Tag is supplied at a concentration of 1.3 µg/µl in 25 mM Tris pH 8.0, 300 mM NaCl, 10% glycerol, 0.5 mM TCEP.**Background:** METTL6 (methyltransferase-like 6) contains a conserved S-adenosylmethionine-binding motif, It is a potential SAM-dependent methyltransferase.**Protein Details:** Recombinant METTL6 protein, His-Tag was expressed in *E. coli* cells as the full length protein (accession number NP_689609.2) with an N-terminal His Tag. The molecular weight of METTL6, His-tag is 36.8 kDa.**Application Notes:** Recombinant METTL6 protein, His-Tag is suitable for use in enzyme kinetics, inhibitor screening, and selectivity profiling.**Storage and Guarantee:** Recombinant proteins in solution are temperature sensitive and must be stored at -80°C to prevent degradation. Avoid repeated freeze/thaw cycles and keep on ice when not in storage. This product is for research use only and is not for use in diagnostic procedures. This product is guaranteed for 6 months from date of arrival.**Recombinant METTL6, His-Tag,
protein gel**12.5% SDS-PAGE gel, stained with
Coomassie blue.

MW: 36.8 kDa

Purity: ≥ 90%