

## Aurora A antibody (mAb)

**Catalog Nos:** 61709, 61710

**RRID:** AB\_2793745

**Clone:** 35C1

**Isotype:** IgG2b

**Application(s):** FC, ICC, IF, IP, WB

**Reactivity:** Human

**Quantities:** 100 µg, 10 µg

**Purification:** Protein A Chromatography

**Host:** Mouse

**Concentration:** 1 µg/µl

**Molecular Weight:** 50 kDa

**Background:** Aurora A (Aurora Kinase A) is a mitotic serine/threonine kinases that contributes to the regulation of cell cycle progression. Associates with the centrosome and the spindle microtubules during mitosis and plays a critical role in various mitotic events including the establishment of mitotic spindle, centrosome duplication, centrosome separation as well as maturation, chromosomal alignment, spindle assembly checkpoint, and cytokinesis. Required for initial activation of CDK1 at centrosomes. Phosphorylates numerous target proteins, including ARHGEF2, BORA, BRCA1, CDC25B, DLGP5, HDAC6, KIF2A, LATS2, NDEL1, PARD3, PPP1R2, PLK1, RASSF1, TACC3, p53/TP53 and TPX2. Regulates KIF2A tubulin depolymerase activity. Required for normal axon formation. Plays a role in microtubule remodeling during neurite extension. Important for microtubule formation and/or stabilization. Also acts as a key regulatory component of the p53/TP53 pathway, and particularly the checkpoint-response pathways critical for oncogenic transformation of cells, by phosphorylating and stabilizing p53/TP53. Phosphorylates its own inhibitors, the protein phosphatase type 1 (PP1) isoforms, to inhibit their activity. Necessary for proper cilia disassembly prior to mitosis.

**Immunogen:** This antibody was raised against full-length recombinant human Aurora A protein.

**Buffer:** Purified IgG in PBS with 30% glycerol and 0.035% sodium azide. Sodium azide is highly toxic.

### Application Notes:

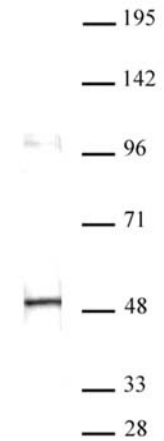
Applications Validated by Active Motif:

WB: 1 - 2 µg/ml dilution

The addition of 0.05% Tween 20 in the blocking buffer and primary antibody incubation buffer is recommended to aid in detection by Western blot. Individual optimization may be required.

**Storage and Guarantee:** Some products may be shipped at room temperature. This will not affect their stability or performance. Avoid repeated freeze/thaw cycles by aliquoting items into single-use fractions for storage at -20°C for up to 2 years. Keep all reagents on ice when not in storage. This product is guaranteed for 12 months from date of receipt.

This product is for research use only and is not for use in diagnostic procedures.



### Aurora A antibody (mAb) (Clone 35C1) tested by Western blot.

Aurora A antibody detection by Western blot. The analysis of Aurora A was performed using HeLa cytoplasmic cell extract (20µg) and Aurora A antibody at a 1 µg/ml dilution.