

Tet2 antibody (mAb)

Catalog Nos: 61389, 61990, 61390

RRID: AB_2736901

Clone: 21F11

Isotype: IgG1, k

Application(s): ICC, IF, IP, WB

Reactivity: Human

Quantities: 100 µg, 50 µg, 10 µg

Purification: Protein A Chromatography

Host: Mouse

Concentration: 1 µg/µl

Molecular Weight: 220 kDa

Background: **Tet2** (tet methylcytosine dioxygenase 2) catalyzes the conversion of methylcytosine (5mC) to 5-hydroxymethylcytosine (5hmC). Plays an important role in myelopoiesis. The clear function of 5-hydroxymethylcytosine (hmC) is still unclear but it may influence chromatin structure and recruit specific factors or may constitute an intermediate component in cytosine demethylation and differentiation in the case of inflammation by regulating gene expression and macrophage differentiation.

Immunogen: This antibody was raised against a recombinant protein corresponding to amino acids 1-300 of human Tet2.

Buffer: Purified IgG in PBS with 30% glycerol and 0.035% sodium azide. Sodium azide is highly toxic.

Application Notes:

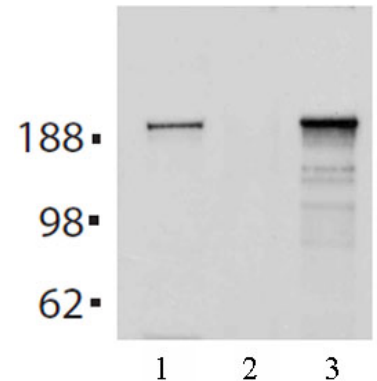
Applications Validated by Active Motif:

IP: 1 - 2 µl per IP

WB: 1 - 2 µg/ml dilution

Storage and Guarantee: Some products may be shipped at room temperature. This will not affect their stability or performance. Avoid repeated freeze/thaw cycles by aliquoting items into single-use fractions for storage at -20°C for up to 2 years. Keep all reagents on ice when not in storage. This product is guaranteed for 12 months from date of receipt.

This product is for research use only and is not for use in diagnostic procedures.



Tet2 antibody (mAb) (Clone 21F11) tested by Immunoprecipitation.

Tet2 detection by Immunoprecipitation. Lane 1: Input (25 µg of HL-60 whole cell lysate). Lane 2: Negative control mAb. Lane 3: Tet2 antibody at 1 µg/ml. 250 µg of HL-60 whole cell lysate per IP.



Tet2 antibody (mAb) (Clone 21F11) tested by Western blot.

Tet2 detection by Western blot. Lane 1: HL-60 whole cell lysate (40 µg). Lane 2: Lymphoblastoid Tet2 negative (-/-) whole cell lysate (40 µg). Lane 3: Lymphoblastoid Tet2 positive (+/+) whole cell lysate (40 µg). All probed with Tet2 antibody at a 1 µg/ml dilution.