

JMJD2B / KDM4B antibody (pAb)

Catalog Nos: 61221, 61222

RRID: AB_2615033

Isotype: IgG

Application(s): ICC, IF, IP, WB

Reactivity: Human

Volumes: 100 μ l, 10 μ l

Purification: Affinity Purified

Host: Rabbit

Molecular Weight: 142 kDa

Background: JMJD2B / KDM4B (JmjC domain-containing histone demethylation protein 3B, Jumonji domain-containing protein 2B, JHDM3B) is a histone demethylase that has been shown to demethylate histone H3 trimethylated at lysine 9. JMJD2B / KDM4B is physically associated with the MLL2 methyltransferase complex where it serves as a co-factor for ER α -mediated transcriptional activation.

Immunogen: This JMJD2B / KDM4B antibody was raised against a peptide within the C-terminal region of human JMJD2B.

Buffer: Purified IgG in PBS with 30% glycerol and 0.035% sodium azide. Sodium azide is highly toxic.

Application Notes:

Applications Validated by Active Motif:

ICC/IF: 1:2,000 dilution

IP: 10 μ l per IP

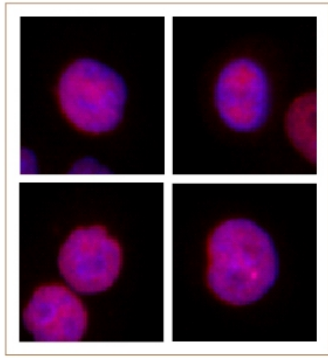
WB*: 1:500 - 1:1,000 dilution

*Note: many chromatin-bound proteins are not soluble in a low salt nuclear extract and fractionate to the pellet. Therefore, we recommend a High Salt / Sonication Protocol when preparing nuclear extracts for Western blot.

For JMJD2B / KDM4B, we also offer AbFlex[®] JMJD2B / KDM4B Recombinant Antibody (rAb). For details, see Catalog No. 91305.

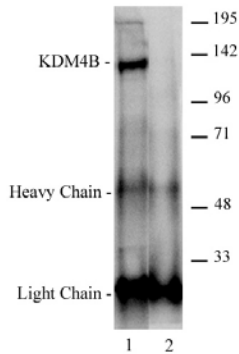
Storage and Guarantee: Some products may be shipped at room temperature. This will not affect their stability or performance. Avoid repeated freeze/thaw cycles by aliquoting items into single-use fractions for storage at -20°C for up to 2 years. Keep all reagents on ice when not in storage. This product is guaranteed for 12 months from date of receipt.

This product is for research use only and is not for use in diagnostic procedures.



JMJD2B / KDM4B antibody (pAb) tested by Immunofluorescence.

Formaldehyde fixed HeLa cells stained with JMJD2B / KDM4B antibody at a 1:2,000 dilution.



JMJD2B / KDM4B antibody (pAb) tested by Immunoprecipitation.

4 μ l of JMJD2B / KDM4B antibody was used to immunoprecipitate JMJD2B / KDM4B from 500 μ g of K562 whole cell extract (lane 2). 4 μ g of mouse IgG was used as a negative control (lane 1). The immunoprecipitated protein was detected by Western blotting using the JMJD2B / KDM4B antibody at a dilution of 1:500.

JMJD2B / KDM4B antibody (pAb) tested by Western blot.

Nuclear extract of K-562 cells (40 μ g) probed with JMJD2B antibody (pAb) at a dilution of 1:500.

