

## Myelin Basic Protein, dephosphorylated

**Catalog No:** 31314

**Expressed In:** Bovine

**Quantity:** 5000 µg

**Concentration:** 5 µg/µl

**Source:** Bovine

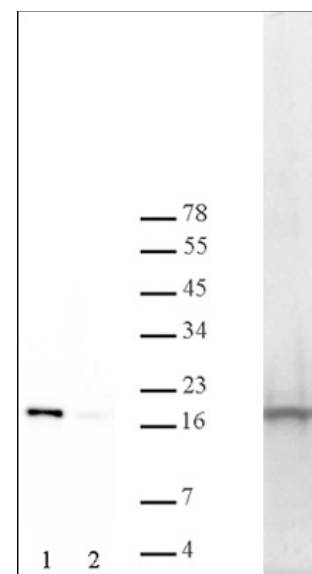
**Buffer Contents:** 5 mg of MBP (18.5 kDa) at a concentration of 5 mg/ml in 10 mM MOPS (pH 7.0), 0.05% sodium azide, 0.02 µg/ml inactive lambda phosphatase, 0.18 mM MnCl<sub>2</sub>, 5mM EDTA.

**Protein Details:** Myelin Basic Protein is purified from bovine brain using SP-Sepharose™ FPLC and dephosphorylated using lambda phosphatase. Lambda phosphatase is then inactivated by the addition of EDTA and heat treatment (65°C for 1 hour). The estimated purity is > 95% based on Coomassie staining.

**Application Notes:** Myelin Basic Protein, MBP, is useful as a substrate for *in vitro* kinase assays, including MAPK, PKA, PKC cyclin-dependent and calmodulin-dependent protein kinases.

**Storage and Guarantee:** Lyophilized proteins can be stored at -20°C or -80°C, preferably desiccated. Recombinant proteins in solution are temperature sensitive and must be stored at -80°C to prevent degradation. Avoid repeated freeze/thaw cycles and keep on ice when not in storage. This product is guaranteed for 6 months from date of receipt.

This product is for research use only and is not for use in diagnostic procedures.



### MBP protein kinase assay.

Myelin Basic Protein was tested in an *in vitro* kinase assay by incubation with (Lane 1) or without MAPK2 (Lane 2), followed by Western blot detection at 1 µg / lane using an MBP phospho Thr98 antibody. To the right of the Western blot is a lane from a Coomassie-stained SDS-PAGE gel on which 4 µg of purified MBP was loaded.