

Chromatin Modifiers
DNA Methylation
Histones & Oncohistones
Transcription Regulation

Highly Characterized Antibodies for Epigenetics and Gene Regulation

At Active Motif, we are committed to providing the highest-quality antibodies for studying epigenetics in the context of histone and DNA modifications. Our antibodies are manufactured in-house, and undergo rigorous development and validation procedures to ensure their quality and performance. Our extensive, novel portfolio of monoclonal, polyclonal and AbFlex® recombinant antibodies are validated for the applications you need – chromatin immunoprecipitation (ChIP), ChIP-Seq, CUT&Tag, Western blot, and more.

To browse our complete list of antibodies and application data, please visit activemotif.com/abs

AbFlex® Recombinant Antibodies

Uniquely designed for multiple labeling methods

AbFlex® antibodies are recombinant antibodies (rAbs) that have been generated using defined DNA sequences to produce highly specific, reproducible antibodies. The unique advantages of the AbFlex® antibody are its flexible labeling and purification options. Each AbFlex® antibody contains a Sortase recognition motif (LPXTG) to covalently add fluorophores, enzymatic substrates (e.g., HRP), peptides, DNA, drugs, or other labels to the antibody in a directed and reproducible manner. Every antibody also contains a 6xHis tag, which can be used with nickel-based purification systems, and an avidin tag sequence for enzymatic biotin conjugation using the biotin ligase, BirA.

**AbFlex is available for
a range of Histone Markers,
DNA Methylation and
Transcription Factors**

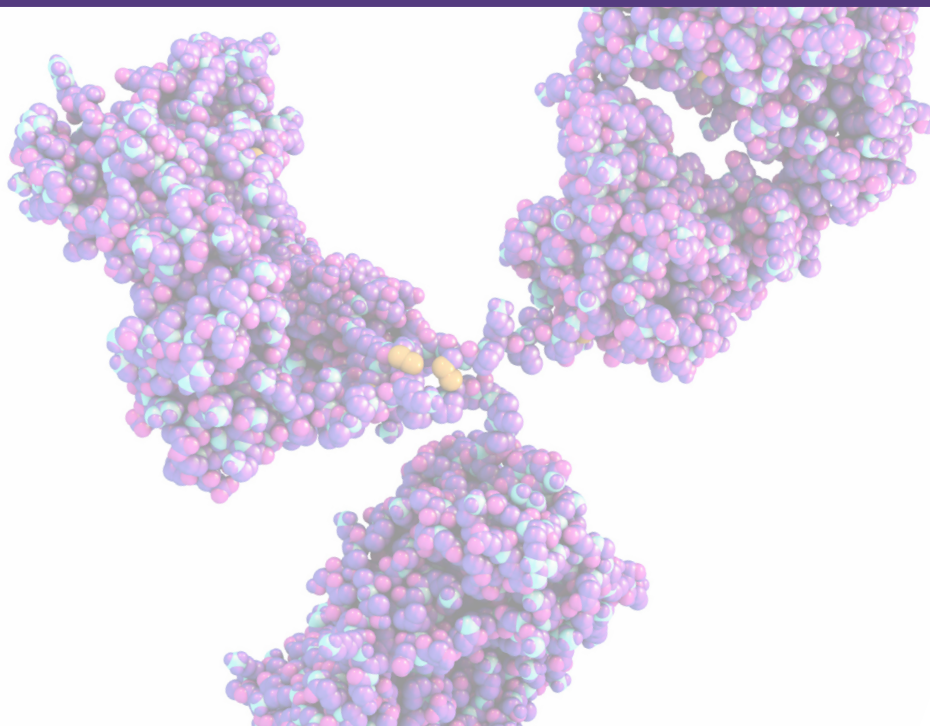
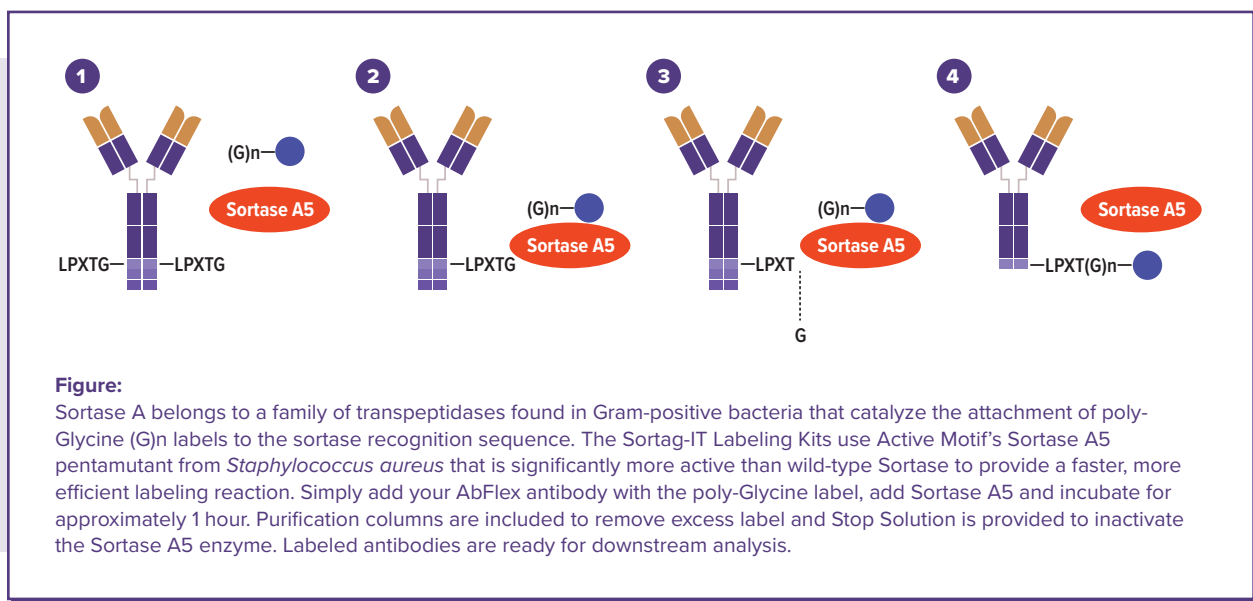


AbFlex™
Recombinant Antibodies

Sortag-IT™ Labeling Kits

Site-specific conjugation to AbFlex® rAbs

Sortag-IT™ Labeling Kits are designed for site-specific labeling of Active Motif's highly specific AbFlex® recombinant antibodies (rAb) via the Sortase tag recognition sequence (LPXTG) that is incorporated into the heavy chains of each AbFlex antibody. Directly conjugate fluorophores, enzymes (HRP, AP), biotin, peptides, DNA, carbohydrates or other labels to the terminal end of the heavy chain to ensure the antigen binding site remains available for target recognition.



CUT&Tag-Validated Antibodies



Cleavage Under Target and Tagmentation (CUT&Tag) is an alternative method to traditional ChIP assays that can reveal interactions between histone modifications and other proteins and the DNA they interact with or to identify DNA binding sites for proteins of interest. The CUT&Tag assay requires a highly specific primary antibody to the protein target of interest that must specifically detect the protein in its native, unfixed form. Active Motif specializes in manufacturing high-quality antibodies to histones, histone modifications, chromatin proteins, and other factors, including a growing list of antibodies that we have experimentally validated in-house to work well in CUT&Tag assays.

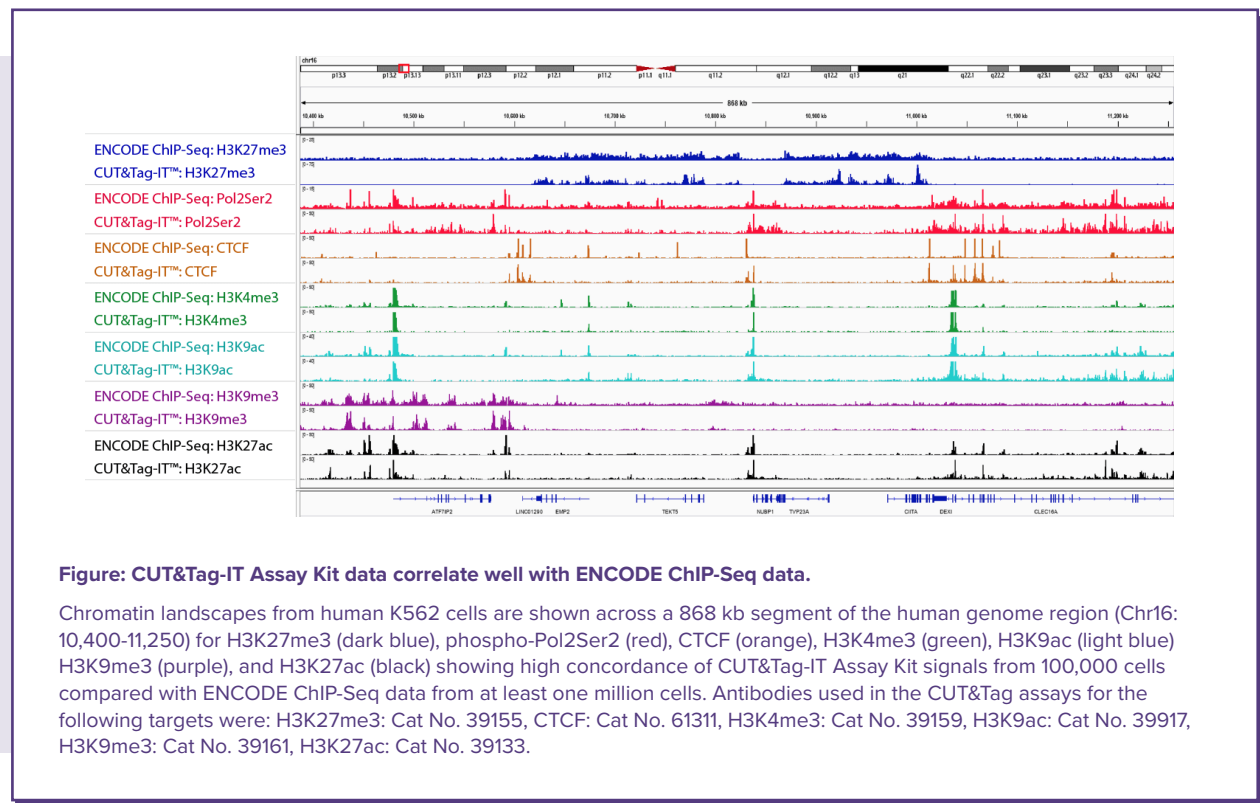
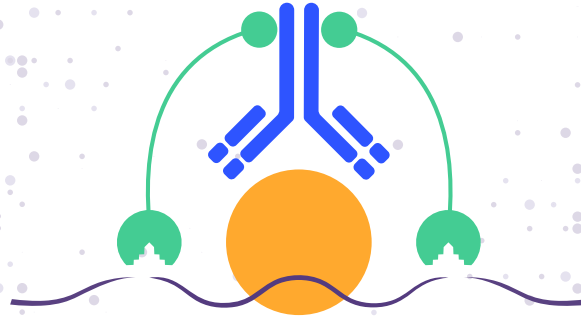


Figure: CUT&Tag-IT Assay Kit data correlate well with ENCODE ChIP-Seq data.

Chromatin landscapes from human K562 cells are shown across a 868 kb segment of the human genome region (Chr16: 10,400-11,250) for H3K27me3 (dark blue), phospho-Pol2Ser2 (red), CTCF (orange), H3K4me3 (green), H3K9ac (light blue), H3K9me3 (purple), and H3K27ac (black) showing high concordance of CUT&Tag-IT Assay Kit signals from 100,000 cells compared with ENCODE ChIP-Seq data from at least one million cells. Antibodies used in the CUT&Tag assays for the following targets were: H3K27me3: Cat No. 39155, CTCF: Cat No. 61311, H3K4me3: Cat No. 39159, H3K9ac: Cat No. 39917, H3K9me3: Cat No. 39161, H3K27ac: Cat No. 39133.

To learn more, visit activemotif.com/cut-tag-ab

CUT&RUN-Validated Antibodies



Cleavage Under Targets & Release Using Nuclease (CUT&RUN) is a method derived from chromatin immunocleavage (ChIC) that it is used to investigate the genome wide distributions of various chromatin-associated proteins and their modifications. CUT&RUN like chromatin immunoprecipitation (ChIP) utilizes an antibody to target chromatin-associated marks and proteins, but requires less sample material, less sequencing depths than ChIP, and no cross-linking.

In CUT&RUN, a protein of interest is tagged with an antibody and bound to the chromatin in intact cells. The DNA is then cleaved at the binding sites of the protein of interest, purified, sequenced, and mapped to the reference genome to determine the protein's binding sites. Active Motif specializes in manufacturing high-quality antibodies to histones, histone modifications, chromatin proteins, and other factors, including a growing list of antibodies that we have experimentally validated in-house to work well in CUT&RUN assays.

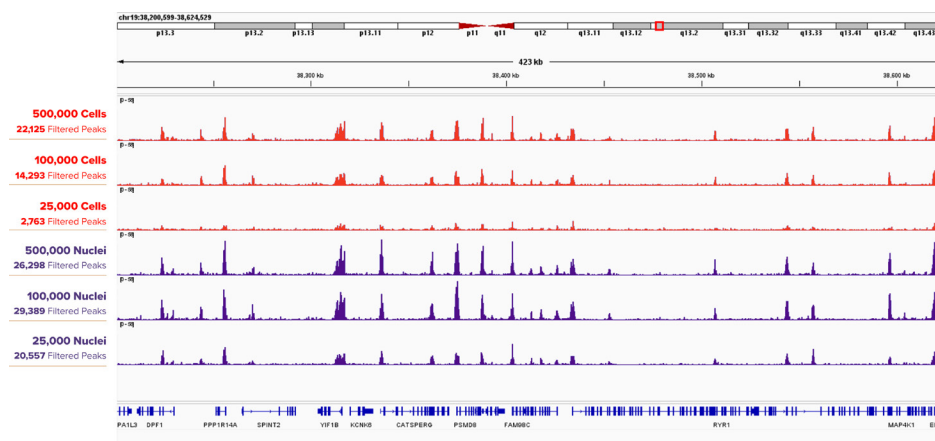


Figure: CUT&RUN H3K4me3 Assay Results Comparing Titrations of K562 Cells versus Nuclei.

500,000, 100,000, 25,000 K562 Cells (top three tracks) or Nuclei (bottom three tracks) were assayed in CUT&RUN with Active Motif's H3K4me3 antibody (Cat No. 39060). Filtered Peaks remain higher at lower input for nuclei than cells, and the browser tracks for nuclei show stronger peaks for each input amount when compared to cells.

To learn more, visit activemotif.com/cut-run-ab

Antibody	Applications	Cat No.
AATF / Che-1 antibody (mAb)	IF, WB	61789
Acetyl-Lysine antibody (rAb)	ICC, WB	91315
ACTL6B antibody (pAb)	WB	61691
AbFlex® Ago 1/2/3 antibody (rAb)	IP	91217
Ago1 antibody (mAb)	IP, WB	61071
Ago1/2/3 antibody (mAb)	ChIP, ICC, IF, IHC, IP, WB	39937
Ago2 antibody (mAb)	ICC, IF, IP, WB	39853
Ago3 antibody (mAb)	ChIP, ICC, IF, IP	39787
Ago4 antibody (mAb)	IP, WB	39855
Ago4 antibody (pAb)	WB	39813
AbFlex® AHR antibody (rAb)	ChIP-Seq, IF, IP, WB	91461
AIB1 / SRC-3 antibody (pAb)	ChIP, WB	39797
AIB3 antibody (pAb)	IHC, WB	39835
AID antibody (mAb)	ChIP, WB	39885
Aiolos antibody (mAb)	ChIP, WB	39657
AbFlex® ALKBH2 antibody (rAb)	WB	91433
ALKBH5 antibody (rAb)	IF, WB	91573
alpha Tubulin antibody (mAb)	ICC, IF, WB	39527
AbFlex® AM-Tag antibody (rAb)	ChIP, ELISA, WB	91111
Androgen Receptor antibody (pAb)	ChIP, ChIP-Seq, WB	39781
ARID3A antibody (pAb)	WB	61615
ASH2L antibody (mAb)	ICC, IF, IHC, IP, WB	61359
ASH2L antibody (pAb)	ChIP, ChIP-Seq, WB	39099
ATAD2 antibody (pAb)	IP, WB	61369
ATF1 antibody (pAb)	WB	61563
ATF4 antibody (pAb)	WB	61655
ATF4 antibody (rAb)	IHC	91575
ATF6 antibody (rAb)	WB	91577
ATG7 antibody (rAb)	WB	91579
ATM phospho Ser1981 antibody (mAb)	ICC, IF, WB	39529
AbFlex® ATM phospho Ser1981 antibody (rAb)	DB, WB	91207
ATRX antibody (pAb)	WB	61049
Aurora A antibody (mAb)	FC, ICC, IF, IP, WB	61709
Aurora B antibody (pAb)	ICC, IF, WB	39261
BACH1 antibody (rAb)	WB	91581
BAP1 antibody (pAb)	WB	61501
BAZ2A antibody (pAb)	IF, WB	61707
BCL11A antibody (mAb)	ICC, IF, IHC, WB	61231
Bcl6 antibody (mAb)	IHC, WB	61193
AbFlex® Bcl6 antibody (rAb)	WB	91287
BCL6 antibody (rAb)	WB	91583
Bcl7A antibody (pAb)	IP, WB	65695
beta Tubulin antibody (mAb)	IHC, WB	61157
beta-Catenin antibody (pAb)	IP, WB	61487
BLIMP1 / PRDM1 antibody (pAb)	IF, WB	61053
BMI-1 antibody (mAb)	ChIP, ChIP-Seq, IF, IHC, WB	39993

Antibody	Applications	Cat No.
BMI-1 antibody (mAb)	ICC, IF, WB	61089
AbFlex® BMI-1 antibody (rAb)	ChIP, ChIP-Seq, WB	91195
Boris / CTCFL antibody (pAb)	ChIP, ChIP-Seq, WB	39851
BRD2 antibody (pAb)	ChIP, ChIP-Seq, CUT&RUN	61797
BRD3 antibody (pAb)	ChIP, ChIP-Seq, WB	61489
BRD4 antibody (pAb)	WB	65713
AbFlex® BRD4 antibody (rAb)	ChIP, ChIP-Seq, CUT&RUN	91301
BRD7 antibody (pAb)	WB	65724
BRD8 / SMAP2 antibody (pAb)	ChIP, ChIP-Seq, WB	61007
BRD9 antibody (pAb)	IP, WB	65705
AbFlex® BRD9 antibody (rAb)	ChIP	91413
AbFlex® BRD9 antibody (rAb)	WB	91427
BrdU antibody (mAb)	IHC	61273
AbFlex® BrdU antibody (rAb)	IF	91269
Bridging Antibody for Mouse IgG	ChIP, IP	53017
BRPF1 antibody (pAb)	WB	61541
Bub1 antibody (mAb)	ICC, IF	39735
BubR1 antibody (mAb)	ICC, IF	39747
C17orf96 antibody (pAb)	ChIP-Seq, WB	61753
C17orf96 phospho Ser15 antibody (pAb)	DB	61745
CABIN1 antibody (pAb)	IP, WB	61597
CAF-1 p150 antibody (mAb)	ICC, IF, IP, WB	39997
CAF-1 p60 antibody (mAb)	ICC, IF, IP, WB	39995
5-Carboxylcytosine (5-caC) antibody (pAb)	DB, ICC, IF, IHC, WB	61225
5-Carboxylcytosine (5-caC) antibody (pAb)	DB, ICC, IF	61229
CARM1 antibody (pAb)	ChIP, IHC, IP, WB	39251
Cas9 antibody (mAb)	ChIP, ICC, IF, IP, WB	61577
Cas9 antibody (mAb)	ChIP, IF, IP, WB	61757
AbFlex® Cas9 antibody (rAb)	ChIP, ChIP-Seq, ELISA, WB	91123
Caspase-3 antibody (mAb)	WB	40924
CBP80 antibody (rAb)	WB	91585
CBX1 antibody (rAb)	WB	91587
CBX8 antibody (pAb)	WB	61237
CDK8 antibody (pAb)	ChIP, ChIP-Seq, WB	61481
CDK9 antibody (pAb)	WB	61559
AbFlex® CDKN2A (p16) antibody (rAb)	ChIP-Seq, IF, IP, WB	91463
CDKN2A antibody (pAb)	IP, WB	61619
CDKN2A p14ARF antibody (pAb)	WB	61689
CDX2 antibody (rAb)	WB	91591
CENP-A phospho Ser18 antibody (pAb)	DB, ICC, IF, WB	61483
CENP-B antibody (pAb)	ICC, IF	61183
CENP-B antibody (pAb)	ICC, IF, IP, WB	61287
CENP-E antibody (mAb)	ICC, IF	39619
c-Fos antibody (pAb)	WB	61421
CHD1 antibody (mAb)	ICC, IF, WB	39989
CHD1 antibody (pAb)	WB	39729

The lists above are a small subset of our antibodies, we also offer each in a **convenient sample size**.

For an up-to-date list of all available antibodies, please visit activemotif.com/abs.

Antibody	Applications	Cat No.
CHD2 antibody (pAb)	WB	39363
CHD3 antibody (mAb)	ICC, IF, IP, WB	61469
AbFlex® CHD3 antibody (rAb)	IP, WB	91273
Chd5 antibody (mAb)	ICC, IF, WB	61683
CHK1 antibody (rAb)	WB	91757
CID antibody (mAb)	ICC, IF	61735
c-Jun antibody (pAb)	WB	65707
CLOCK antibody (rAb)	WB	91593
c-Myc antibody (mAb)	EMSA, IP, WB	61075
AbFlex® c-Myc antibody (rAb)	WB	91213
c-Myc antibody (rAb)	WB	91595
COPS8 antibody (rAb)	WB	91597
CoREST antibody (pAb)	WB	39955
CREB1 phospho Ser133 (rAb)	IHC, WB	91681
CTBP antibody (pAb)	WB	39847
CTBP2 antibody (pAb)	ChIP, ChIP-Seq, WB	61261
AbFlex® CTCF antibody (rAb)	ChIP, ChIP-Seq, CUT&Tag, WB	91285
CtIP antibody (mAb)	ChIP, ICC, IF, IP, WB	61141
CUL4B antibody (pAb)	WB	61445
CUX2 antibody (rAb)	WB	91599
Cxxc4 antibody (pAb)	WB	61679
DAP-3 antibody (mAb)	WB	40963
DAX-1 / NROB1 antibody (mAb)	ICC, IF, IHC, WB	39983
DDB1 antibody (pAb)	WB	61127
Ddit3 antibody (mAb)	IP, WB	61349
DDX3 antibody (rAb)	WB	91601
DHX9 antibody (mAb)	ICC, IF, WB	61705
DMAP1 antibody (pAb)	IP, WB	61675
DNA-RNA Hybrid antibody (mAb)	ChIP, ChIP-Seq, DB, EMSA, ICC, IF, IP	65683
DNMT1 antibody (mAb)	ChIP, IHC, IP, WB	39204
DNMT1 antibody (mAb)	ChIP, IP, WB	61467
DNMT1 antibody (pAb)	WB	39905
AbFlex® DNMT1 antibody (rAb)	WB	91175
DNMT1 monomethyl Lys142 antibody (pAb)	WB	61497
DNMT3A antibody (mAb)	ChIP, IHC, WB	39206
DNMT3B antibody (mAb)	WB	61503
DNMT3B antibody (pAb)	WB	39899
DOT1L antibody (pAb)	WB	39953
DPPA2 antibody (pAb)	WB	65619
DPPA4 antibody (pAb)	WB	65717
Drosha antibody (pAb)	IP, WB	39783
E2F7 antibody (rAb)		91603
EED antibody (mAb)	ChIP, ChIP-Seq, IHC, WB	61203
AbFlex® EED antibody (rAb)	ChIP, ChIP-Seq, ELISA	91135
AbFlex® EEF1AK55me2 antibody (rAb)	WB	91465
AbFlex® EHMT2 (G9a) antibody (rAb)	WB	91229

Antibody	Applications	Cat No.
Elk-1 antibody (pAb)	IP, WB	61301
ELP3 antibody (pAb)	WB	39949
ERR-α antibody (pAb)	WB	61047
Estrogen Receptor α antibody (mAb)	ChIP, IP, WB	61035
Estrogen Receptor α antibody (pAb)	ChIP, WB	65715
AbFlex® Estrogen Receptor α antibody (rAb)	WB	91411
Estrogen Receptor β antibody (mAb)	IHC, IP, WB	39767
ETO / RUNX1T1 antibody (pAb)	IP, WB	61109
Ets-1 antibody (pAb)	ChIP-Seq, CUT&RUN, WB	39580
EuHMT1 antibody (pAb)	WB	39777
EZH1 antibody (pAb)	WB	61583
EZH2 antibody (mAb)	ChIP	39875
EZH2 antibody (pAb)	ChIP, ChIP-Seq, CUT&RUN, IP	39901
EZH2 antibody (pAb)	ChIP	61641
EZH2 antibody (pAb)	WB	65732
AbFlex® EZH2 antibody (rAb)	IP	91159
FANCM antibody (rAb)	IP	91605
FEN1 antibody (pAb)	WB	65709
FEZF1 antibody (rAb)		91759
5-Formylcytosine (5-fC) antibody (pAb)	DB, ICC, IF, IHC, WB	61223
5-Formylcytosine (5-fC) antibody (pAb)	DB, ICC, IF, WB	61227
FosB antibody (mAb)	WB	40960
FOXG1 antibody (pAb)	ChIP, ChIP-Seq, WB	61211
FOXL2 antibody (pAb)	WB	61283
FOXO1 antibody (pAb)	WB	61693
FOXO1 antibody (rAb)	WB	91607
FOXO1/FKHR antibody (pAb)	IP, WB	39629
FOXP1 antibody (mAb)	ChIP, ChIP-Seq, EMSA, WB	61309
FTO antibody (pAb)	WB	61431
GADD34 antibody (rAb)	WB	91609
GATA-4 antibody (pAb)	WB	39893
GATA-6 antibody (pAb)	ICC, IF, WB	61063
Geminin antibody (pAb)	IF, IP, WB	61135
GFI1 antibody (pAb)	WB	61553
GLI1 antibody (pAb)	WB	61215
GLIS1 antibody (mAb)	IF, WB	61801
GLYR1 antibody (pAb)	WB	65693
Goosecoid antibody (pAb)	WB	61121
Histone H1 antibody (mAb)	ChIP, ChIP-Seq, IF, IP, WB	61785
Histone H1 antibody (pAb)	ICC, IF, WB	39707
Histone H1 antibody (pAb)	WB	61201
Histone H1.0 antibody (pAb)	WB	61417
Histone H1.5S17ph antibody (pAb)	DB, WB	61107
Histone H2A antibody (pAb)	WB	39209
Histone H2A antibody (pAb)	ChIP, IP, WB	39235
Histone H2A antibody (pAb)	ChIP, WB	39945

The lists above are a small subset of our antibodies, we also offer each in a **convenient sample size**.

For an up-to-date list of all available antibodies, please visit activemotif.com/abs.

Antibody	Applications	Cat No.
AbFlex® Histone H2A antibody (rAb)	WB	91325
Histone H2A, acidic patch antibody (pAb)	ChIP, WB	39111
Histone H2A, C-terminal antibody (pAb)	IF, WB	39591
Histone H2A.J antibody (pAb)	DB, WB	61793
Histone H2A.X antibody (pAb)	ChIP, ICC, IF, WB	39689
Histone H2A.XS139ph antibody (pAb)	DB, ICC, IF, WB	39117
Histone H2A.XS139ph antibody (rAb)	ICC, WB	91313
AbFlex® Histone H2A.XS139ph antibody (rAb)	WB	91395
Histone H2A.XY142ph antibody (pAb)	DB, WB	61617
Histone H2A.Z antibody (pAb)	ChIP, ChIP-Seq, DB, IF, WB	39113
Histone H2A.Z antibody (pAb)	ChIP, ChIP-Seq, DB, ICC, IF, WB	39943
Histone H2A.Z.2.2 antibody (mAb)	WB	61737
Histone H2A/H4S1ph antibody (pAb)	DB, WB	39115
Histone H2AK119ub antibody (pAb)	DB, WB	65697
Histone H2AK5ac antibody (pAb)	ChIP, DB, IF, WB	39107
Histone H2AK9ac antibody (pAb)	DB, IF, WB	39109
Histone H2AK9ac antibody (rAb)	WB	91569
Histone H2AQ104me1 antibody (pAb)	DB, WB	61605
Histone H2AS129ph antibody (pAb)	ChIP, DB, WB	39271
Histone H2AT120ph antibody (pAb)	DB, WB	39391
Histone H2AT120ph antibody (pAb)	DB, IF, WB	61195
Histone H2Av antibody (mAb)	ChIP, WB	61751
Histone H2B antibody (pAb)	WB	39125
Histone H2B antibody (pAb)	WB	39210
Histone H2B antibody (pAb)	ChIP, WB	39237
Histone H2B antibody (pAb)	WB	39947
Histone H2BK120ac antibody (pAb)	ChIP, ChIP-Seq, DB, IF, WB	39119
Histone H2BK120ub1 antibody (mAb)	ChIP, WB	39623
Histone H2BK12ac antibody (pAb)	ChIP, DB, IF, WB	39669
Histone H2BK15ac antibody (pAb)	WB	61321
Histone H2BK16ac antibody (pAb)	ChIP, DB, IF, WB	39121
Histone H2BK46ac antibody (pAb)	ChIP, WB	39571
Histone H2BK46me2 antibody (pAb)	DB, ICC, IF, WB	39567
Histone H2BK5ac antibody (pAb)	ChIP, ChIP-Seq, DB, IF, WB	39123
Histone H2BK5me1 antibody (pAb)	DB, WB	61439
Histone H2BS14ph antibody (mAb)	ICC, IF, WB	61011
Histone H3 antibody (mAb)	ChIP, ChIP-Seq, ICC, IF	39763
Histone H3 antibody (mAb)	ICC, IF, WB	61647
Histone H3 antibody (pAb)	ChIP-Seq, WB	61799
Histone H3, C-terminal antibody (pAb)	ELISA, WB	39451
AbFlex® Histone H3, C-terminal antibody (rAb, Mouse)	WB	91297
AbFlex® Histone H3, C-terminal antibody (rAb, Rabbit)	ChIP, WB	91299
Histone H3.1 / 3.2 antibody (mAb)	ChIP, ChIP-Seq, ICC, IF, WB	61629
Histone H3.1S28ph antibody (mAb)	ICC, IF, WB	61697
AbFlex® Histone H3.3 antibody (rAb)	ChIP-Seq, WB	91191
AbFlex® H3.3K27acS31ph antibody (rAb)	ChIP-Seq, DB, WB	91425

Antibody	Applications	Cat No.
Histone H3.3K27M antibody (pAb)	WB	61803
Histone H3.3S31ph antibody (pAb)	DB, IF, WB	39637
Histone H3.cs1 antibody (pAb)	WB	39573
Histone H3.X/Y antibody (mAb)	ChIP, ICC, IF, WB	61161
Histone H3ac (pan-acetyl) antibody (pAb)	ChIP, ChIP-Seq, DB, MeDIP, WB	39139
Histone H3ac (pan-acetyl) antibody (pAb)	ChIP, DB, IF, WB	61637
AbFlex® Histone H3ac (pan-acetyl) antibody (rAb)	WB	91419
Histone H3K122me1 antibody (pAb)	DB, WB	39367
Histone H3K14ac antibody (pAb)	ChIP, DB, WB	65701
AbFlex® Histone H3K14ac antibody (rAb)	ELISA, WB	91397
Histone H3K14bz antibody (pAb)	DB, WB	39303
Histone H3K14me1 antibody (pAb)	DB, IF, WB	61509
Histone H3K14me2 antibody (pAb)	WB	39349
Histone H3K14me3 antibody (pAb)	DB, WB	61549
Histone H3K18ac antibody (pAb)	IF, WB	39129
Histone H3K18ac antibody (pAb)	ChIP, DB, ICC, IF, IHC, WB	39587
Histone H3K18ac antibody (pAb)	ChIP, DB, ICC, IF, WB	39693
Histone H3K18ac antibody (pAb)	ChIP, ChIP-Seq, DB, ICC, IF, WB	39755
Histone H3K18me1 antibody (pAb)	DB, WB	39667
Histone H3K23ac antibody (pAb)	ChIP, DB, ICC, IF, IP, WB	39131
Histone H3K23me1 antibody (pAb)	DB, ICC, IF, WB	39387
Histone H3K23me2 antibody (pAb)	ChIP, DB, ICC, IF, WB	39653
Histone H3K23me3 antibody (pAb)	DB, ICC, IF	61499
Histone H3K23pr antibody (pAb)	DB, WB	61397
Histone H3K27ac antibody (mAb)	ChIP, ChIP-Seq, DB, ICC, IF, WB	39685
Histone H3K27ac antibody (pAb)	ChIP, ChIP-Seq, CUT&Tag, DB, ICC, IF, IHC, WB	39133
Histone H3K27ac antibody (pAb)	ChIP, ChIP-Seq, CUT&Tag, DB, WB	39135
AbFlex® Histone H3K27ac antibody (rAb)	ChIP-Seq, CUT&RUN, CUT&Tag, ELISA, WB	91193
Histone H3K27ac antibody (rAb)	WB	91571
Histone H3K27me1 antibody (mAb)	ChIP, ChIP-Seq, CUT&Tag, DB, ICC, IF, WB	61015
Histone H3K27me1 antibody (pAb)	DB, ICC, IF, WB	39377
Histone H3K27me1 antibody (pAb)	DB, WB	39889
Histone H3K27me2 antibody (mAb)	ChIP, ChIP-Seq, CUT&Tag, WB	61435
Histone H3K27me2 antibody (pAb)	ChIP, ChIP-Seq, DB, ICC, IF, WB	39245
Histone H3K27me2 antibody (pAb)	DB, ICC, IF, WB	39919
Histone H3K27me2me3 antibody (mAb)	ChIP, ChIP-Seq, CUT&Tag, IF, WB	39535
Histone H3K27me2me3 antibody (mAb)	ChIP, ICC, IF, WB	39536
Histone H3K27me3 antibody (mAb)	ChIP, ChIP-Seq, DB, ICC, IF, WB	61017
Histone H3K27me3 antibody (pAb)	ChIP, ChIP-Seq, CUT&RUN, CUT&Tag, DB, ICC, IF, IHC, WB	39155
Histone H3K27me3 antibody (pAb)	ChIP, CUT&Tag, DB, ICC, IF, IP, WB	39156
AbFlex® Histone H3K27me3 antibody (rAb)	CUT&Tag, DB, WB	91167
AbFlex® Histone H3K27me3 antibody (rAb)	ChIP, DB, WB	91403
Histone H3K36ac antibody (pAb)	ChIP, ChIP-Seq, DB, ICC, IF, WB	39379
Histone H3K36me0 antibody (pAb)	DB, WB	65111
Histone H3K36me1 antibody (pAb)	DB, WB	61351
Histone H3K36me2 antibody (mAb)	ChIP, DB, IF, WB	61019

The lists above are a small subset of our antibodies, we also offer each in a **convenient sample size**.

For an up-to-date list of all available antibodies, please visit activemotif.com/abs.

Antibody	Applications	Cat No.
Histone H3K36me2 antibody (pAb)	ChIP, ChIP-Seq, CUT&Tag, DB, ICC, IF, WB	39255
Histone H3K36me2 antibody (pAb)	DB, WB	39891
Histone H3K36me3 antibody (mAb)	ChIP, ChIP-Seq, DB, IF, WB	61021
Histone H3K36me3 antibody (pAb)	ChIP, ChIP-Seq, CUT&Tag, DB, WB	61101
AbFlex® Histone H3K36me3 antibody (rAb)	ChIP, ChIP-Seq, WB	91265
Histone H3K37ac antibody (pAb)	DB, IF, WB	61587
Histone H3K4ac antibody (pAb)	ChIP, ChIP-Seq, DB, ICC, IF, WB	39381
Histone H3K4ac antibody (pAb)	ChIP, ChIP-Seq, DB, WB	61809
Histone H3K4K9K18 (pan-biotinylated) antibody (pAb)	DB, ICC, IF, WB	61391
AbFlex® Histone H3K4me0 antibody (rAb, mouse)	DB, WB	91267
AbFlex® Histone H3K4me0 antibody (rAb, rabbit)	DB, WB	91317
Histone H3K4me1 antibody (mAb)	ChIP, ChIP-Seq, CUT&Tag, DB, WB	39635
Histone H3K4me1 antibody (pAb)	ChIP, ChIP-Seq, WB	39299
Histone H3K4me1 antibody (pAb)	ChIP, ChIP-Seq, WB	61781
AbFlex® Histone H3K4me1 antibody (rAb)	WB	91289
AbFlex® Histone H3K4me1 antibody (rAb)	CUT&Tag, WB	91415
Histone H3K4me2 antibody (mAb)	ChIP, ChIP-Seq, DB, ICC, IF, WB	39679
Histone H3K4me2 antibody (pAb)	ChIP, ChIP-Seq, CUT&Tag, DB, WB	39141
Histone H3K4me2 antibody (pAb)	ChIP, DB, ICC, IF, WB	39913
AbFlex® Histone H3K4me2 antibody (rAb)	ChIP, ChIP-Seq, WB	91321
Histone H3K4me3 antibody (mAb)	ChIP, ChIP-Seq, ICC, IF, WB	61379
Histone H3K4me3 antibody (pAb)	ChIP, ChIP-Seq, CUT&RUN, CUT&Tag, DB, ICC, IF, IHC, WB	39159
Histone H3K4me3 antibody (pAb)	ChIP, ChIP-Seq, CUT&RUN, DB, ICC, IF, WB	39915
AbFlex® Histone H3K4me3 antibody (rAb)	ChIP, ChIP-Seq, CUT&RUN, CUT&Tag, DB, WB	91263
Histone H3K56ac antibody (mAb)	ChIP, DB	61061
Histone H3K56ac antibody (pAb)	ChIP, ChIP-Seq, CUT&Tag, DB, WB	39281
AbFlex® Histone H3K56ac antibody (rAb)	ChIP-Seq, ELISA	91127
Histone H3K56me1 antibody (pAb)	DB, WB	39273
Histone H3K56me2 antibody (pAb)	ChIP, DB, WB	39277
Histone H3K79ac antibody (pAb)	ChIP, DB, WB	39565
Histone H3K79me1 antibody (pAb)	ChIP, WB	39145
Histone H3K79me1 antibody (pAb)	ChIP, DB, WB	39921
Histone H3K79me2 antibody (pAb)	ChIP, ChIP-Seq, DB, WB	39143
Histone H3K79me2 antibody (pAb)	ChIP, DB, WB	39923
AbFlex® Histone H3K79me2 antibody (rAb)	ChIP, DB, WB	91399
Histone H3K9ac antibody (mAb)	ChIP, ChIP-Seq, DB, ICC, IF, WB	61251
Histone H3K9ac antibody (mAb)	ChIP, ChIP-Seq, ICC, IF, WB	61663
Histone H3K9ac antibody (pAb)	ChIP, ChIP-Seq, DB, IF, WB	39137
Histone H3K9ac antibody (pAb)	DB, ICC, IF, WB	39585
Histone H3K9ac antibody (pAb)	ChIP, ChIP-Seq, CUT&Tag, DB, ICC, IF, WB	39917
AbFlex® Histone H3K9ac antibody (rAb)	ChIP, ChIP-Seq, ELISA, ICC, IF, WB	91103
Histone H3K9me0 antibody (mAb)	WB	61399
AbFlex® Histone H3K9me0 antibody (rAb)	ChIP, ChIP-Seq, ELISA, ICC, IF, WB	91155
Histone H3K9me1 antibody (mAb)	ChIP, DB, WB	39681
Histone H3K9me1 antibody (pAb)	ChIP-Seq, DB, ICC, IF, WB	39249
Histone H3K9me1 antibody (pAb)	ChIP, ChIP-Seq, DB, WB	39887

Antibody	Applications	Cat No.
Histone H3K9me1me2 antibody (rAb)	WB	91651
Histone H3K9me1me2me3 antibody (pAb)	DB, ICC, IF, WB	39241
Histone H3K9me2 antibody (mAb)	ChIP, DB, ICC, IF, WB	39683
Histone H3K9me2 antibody (pAb)	ChIP, DB, ICC, IF, WB	39239
Histone H3K9me2 antibody (pAb)	ChIP, DB, ICC, IF, IP, WB	39375
Histone H3K9me2 antibody (pAb)	ChIP, DB, ICC, IF, WB	39753
AbFlex® Histone H3K9me2 antibody (rAb)	WB	91335
Histone H3K9me3 antibody (mAb)	DB, ICC, IF, WB	39285
Histone H3K9me3 antibody (mAb)	ChIP, DB, ICC, IF, WB	61013
Histone H3K9me3 antibody (pAb)	ChIP, ChIP-Seq, CUT&Tag, DB, ICC, IF, IHC, WB	39161
Histone H3K9me3 antibody (pAb)	ChIP, CUT&Tag, DB, ICC, IF, WB	39765
Histone H3R17me2a (asymmetric) antibody (pAb)	ChIP, DB, IF, IHC, WB	39709
Histone H3R17me2aK18ac antibody (pAb)	ChIP, DB, WB	61613
Histone H3R8me1 antibody (pAb)	DB, WB	39673
Histone H3R8me2a (asymmetric) antibody (pAb)	ChIP, ChIP-Seq, DB, WB	39651
Histone H3S10ph antibody (mAb)	DB, ICC, IF, WB	39636
Histone H3S10ph antibody (mAb)	ELISA, ICC, IF, WB	61623
Histone H3S10ph antibody (pAb)	ChIP, DB, ICC, IF, WB	39253
AbFlex® Histone H3S10ph antibody (rAb)	DB, WB	91131
Histone H3S10phS28ph antibody (pAb)	ChIP, ICC, IF, WB	39147
Histone H3S28ph antibody (mAb)	IF, IHC	39098
Histone H3S28ph antibody (mAb)	WB	61325
Histone H3S28ph antibody (mAb)	ICC, IF, WB	61695
Histone H3T11ph antibody (pAb)	DB, WB	39151
Histone H3T11ph antibody (pAb)	DB, WB	61197
Histone H3T32ph antibody (mAb)	ICC, IF, WB	61777
Histone H3T3ph antibody (pAb)	DB, ICC, IF, WB	39153
Histone H3T45ph antibody (pAb)	DB, WB	39737
Histone H4 antibody (mAb)	ChIP, WB	61521
Histone H4 antibody (pAb)	ChIP, WB	39269
Histone H4 antibody (pAb)	WB	61199
Histone H4 antibody (pAb)	ChIP, ChIP-Seq, WB	61299
AbFlex® Histone H4 antibody (rAb)	WB	91295
Histone H4ac (pan-acetyl) antibody (pAb)	ChIP, DB, ICC, IF, WB	39243
Histone H4ac (pan-acetyl) antibody (pAb)	ChIP, ChIP-Seq, DB, ICC, IF, IHC, WB	39925
Histone H4H18ph antibody (pAb)	DB, WB	61411
Histone H4H18ph antibody (pAb)	DB, WB	61413
Histone H4K12ac antibody (mAb)	ChIP, DB, WB	61527
Histone H4K12ac antibody (pAb)	ChIP, ChIP-Seq, DB, ICC, IF, WB	39165
Histone H4K12ac antibody (pAb)	ChIP, DB, ELISA, ICC, IF, WB	39927
Histone H4K16ac antibody (mAb)	ChIP, DB, IF, WB	61529
Histone H4K16ac antibody (pAb)	ChIP, ChIP-Seq, DB, IF, WB	39167
Histone H4K16ac antibody (pAb)	ChIP, DB, IHC, WB	39929
Histone H4K20ac antibody (mAb)	ChIP, DB	61531
Histone H4K20me1 antibody (mAb)	ChIP, ChIP-Seq, DB, ICC, IF, WB	39727
AbFlex® Histone H4K20me1 antibody (rAb)	WB	91291

The lists above are a small subset of our antibodies, we also offer each in a **convenient sample size**.

For an up-to-date list of all available antibodies, please visit activemotif.com/abs.

Antibody	Applications	Cat No.
Histone H4K20me2 antibody (mAb)	WB	39539
Histone H4K20me2 antibody (mAb)	DB, WB	61533
Histone H4K20me3 antibody (mAb)	ChIP, DB, ICC, WB	39671
AbFlex® Histone H4K20me3 antibody (rAb)	ChIP, ChIP-Seq, ELISA, ICC, IF, WB	91107
Histone H4K31me1 antibody (pAb)	DB, IF, WB	39385
Histone H4K5ac antibody (mAb)	ChIP, DB, ICC, IF, WB	61523
Histone H4K5ac antibody (pAb)	ChIP, DB, ICC, IF, WB	39169
Histone H4K5ac antibody (pAb)	ChIP, DB, ICC, IF, WB	39583
Histone H4K5ac antibody (pAb)	ChIP, ChIP-Seq, DB, IF, WB	39699
AbFlex® Histone H4K5ac/K8ac antibody (rAb)	ChIP, ChIP-Seq, DB, ELISA, WB	91319
Histone H4K8ac antibody (mAb)	ChIP, DB, WB	61525
Histone H4K8ac antibody (pAb)	WB	39171
Histone H4K8ac antibody (pAb)	ChIP, ChIP-Seq, DB, ICC, IF, WB	61103
Histone H4K8K12K16 (pan-biotinylated) antibody (pAb)	DB	61393
Histone H4R3me2a (asymmetric) antibody (pAb)	ChIP, DB, IF, WB	39705
Histone H4R3me2s (symmetric) antibody (pAb)	ChIP, ChIP-Seq, DB, WB	61187
HA-Tag antibody (mAb)	IP	39627
AbFlex® HA-Tag antibody (rAb)	IP	91271
HDAC1 antibody (mAb)	ChIP, ICC, IF, IHC, IP, WB	39531
HDAC1 antibody (mAb)	WB	39881
HDAC1 antibody (pAb)	ChIP, ChIP-Seq, WB	40967
AbFlex® HDAC1 antibody (rAb)	ChIP-Seq, WB	91215
HDAC11 antibody (pAb)		39208
HDAC2 antibody (mAb)	ChIP, ICC, IF, WB	39533
AbFlex® HDAC2 antibody (rAb)	ChIP-Seq, WB	91197
HDAC3 antibody (mAb)	IP, WB	39717
HDAC3 antibody (pAb)	ChIP, WB	40968
AbFlex® HDAC3 antibody (rAb)	WB	91199
HDAC3 antibody (rAb)	IHC, WB	91613
HDAC3 Phospho Ser424 antibody (pAb)	DB, WB	65722
HDAC4 antibody (pAb)	ChIP, ChIP-Seq, WB	40969
HDAC6 antibody (pAb)	ChIP, WB	40971
HDAC9 antibody (pAb)	WB	39793
HIC2 antibody (rAb)		91615
HIF-1 alpha antibody (mAb)	IHC, WB	61275
HIF-1 alpha antibody (pAb)	ChIP, ChIP-Seq, WB	39665
AbFlex® HIF-1 alpha antibody (rAb)	ELISA	91139
HIPK2 antibody (mAb)	ICC, IF, IHC, IP, WB	39677
HIRA antibody (mAb)	IP, WB	39555
HIRA antibody (mAb)	ICC, IF, WB	39557
AbFlex® His-Tag antibody (rAb)	WB	91183
HMGA1 antibody (pAb)	ICC, IF, WB	39615
HMGA2 / HMGI-C antibody (pAb)	IP, WB	61041
HMGB1 antibody (rAb)	WB	91767
HMGN1 antibody (pAb)	IP, WB	39833
Hmgn2 antibody (pAb)	WB	61353

Antibody	Applications	Cat No.
HNF-3α / FOXA1 antibody (mAb)	ChIP, ChIP-Seq, IHC, WB	39837
HNF-3β / FOXA2 antibody (pAb)	IHC, WB	39827
HNF4A antibody (pAb)	ICC, IF, WB	61189
hnRNPA2B1 antibody (pAb)	WB	65726
HNRNPC antibody (pAb)	WB	65742
HNRNPC antibody (rAb)	WB	91617
HOXA9 antibody (pAb)	WB	39825
HOXB6 antibody (rAb)		91619
HP1 antibody (rAb)	WB	91589
HP1 gamma phospho Ser93 antibody (pAb)	WB	39655
HP1α antibody (pAb)	WB	39295
AbFlex® HP1α antibody (rAb)	WB	91405
AbFlex® HP1β antibody (rAb)	ELISA, ICC, IF, IP, WB	91407
AbFlex® HP1γ antibody (rAb)	WB	91409
HRP Goat anti-Mouse IgG	ELISA, IHC, WB	15014
HRP Goat anti-Rabbit IgG	ELISA, IHC, WB	15015
HSC70 / HSP7C antibody (mAb)	ICC, IF, IP, WB	61207
HSP70 antibody (rAb)	WB	91621
Htz1 / Histone H2A.Z antibody (pAb)	ChIP, ChIP-Seq, WB	39647
HuR/ELAVL1 antibody (rAb)	WB	91623
5-Hydroxymethylcytosine (5-hmC) antibody (mAb)	DB, ICC, IF, IHC, MeDIP	39999
5-Hydroxymethylcytosine (5-hmC) antibody (pAb)	DB, FC, ICC, IF, IHC, MeDIP	39769
5-Hydroxymethylcytosine (5-hmC) antibody (pAb)	DB, IF, IHC, MeDIP	39791
IFI35 antibody (rAb)		91625
IFNA1 antibody (mAb)	ELISA	61603
IGF2BP2 antibody (rAb)	WB	91627
IGF2BP3 antibody (rAb)	WB	91629
Ikaros antibody (mAb)	ChIP, ChIP-Seq, WB	39355
Ikaros antibody (pAb)	ChIP, EMSA, WB	39291
IKKi/IKKε antibody (pAb)	WB	40957
IKKy antibody (mAb)	WB	40908
INCENP antibody (mAb)	ICC, IF	39259
ING5 antibody (mAb)	IP, WB	65685
AbFlex® ING5 antibody (rAb)	WB	91329
IRF-2 antibody (pAb)	WB	61281
IRF-3 antibody (pAb)	ChIP, WB	39371
IRF3 antibody (rAb)	WB	91633
IRF-4 antibody (pAb)	WB	61511
IRF-5 antibody (pAb)	ChIP, ChIP-Seq, WB	61269
IκBα antibody (mAb)	WB	40903
IκBα antibody (rAb)	WB	91631
IκBα phospho Ser32,36 antibody (mAb)	WB	40904
IκBα phospho Ser32/36 (rAb)	WB	91683
AbFlex® JAK2 antibody (rAb)	IF, IP	91457
AbFlex® JAK2 antibody (rAb)	WB	91459
JARID1B / KDM5B antibody (pAb)	ChIP	65730

The lists above are a small subset of our antibodies, we also offer each in a **convenient sample size**.

For an up-to-date list of all available antibodies, please visit activemotif.com/abs.

Antibody	Applications	Cat No.
JMJD2A antibody (mAb)	WB	39815
AbFlex® JMJD2A antibody (rAb)	ELISA, WB	91143
JMJD2B / KDM4B antibody (pAb)	ICC, IF, IP, WB	61221
AbFlex® JMJD2B / KDM4B antibody (rAb)	IP, WB	91305
AbFlex® JMJD2C / KDM4C antibody (rAb)	WB	91307
AbFlex® JMJD2D / KDM4D antibody (rAb)	DB, IP, WB	91369
JMJD2D antibody (pAb)	WB	39247
JMJD3 / KDM6B antibody (mAb)	WB	61387
JMJD6 antibody (pAb)	WB	61493
JNK phospho Tyr185 (rAb)	WB	91685
JUN phospho Ser73 (rAb)	WB	91687
JunB antibody (pAb)	WB	39549
JunD antibody (pAb)	ChIP-Seq, CUT&RUN, IP, WB	61403
JunD antibody (rAb)	WB	91635
KAT2A (GCN5) antibody (pAb)	IP, WB	39831
AbFlex® KAT2A (GCN5) antibody (rAb)	WB	91435
KAT5 antibody (pAb)	WB	61545
KAT5 antibody (rAb)		91765
KDM1B / LSD2 antibody (pAb)	WB	61457
AbFlex® KDM1B / LSD2 antibody (rAb)	WB	91327
KDM2B antibody (mAb)	WB	65699
KDM4C antibody (pAb)	WB	61687
AbFlex® KDM5A antibody (rAb)	ChIP-Seq, WB	91211
KEAP1 antibody (rAb)	IHC, WB	91637
KHSRP antibody (rAb)	IP, WB	91639
Ki-67 antibody (pAb)	WB	39799
KLF4 antibody (pAb)	WB	39745
KLF5 antibody (pAb)	ChIP, ChIP-Seq, ICC, IF, WB	61099
KLF6 antibody (mAb)	IHC, WB	61297
KLF6 antibody (pAb)	WB	61243
KMT2E (MLL5) antibody (pAb)	WB	61447
AbFlex® KRAS antibody (rAb)	ELISA, WB	91423
L3MBTL1 antibody (pAb)	ChIP, ChIP-Seq, WB	39182
L3MBTL2 antibody (pAb)	IP, WB	39569
Lamin A, mature antibody (mAb)	ICC, IF, IP, WB	39961
Lamin A/C antibody (mAb)	ChIP, ICC, IF, IP, WB	39287
AbFlex® Lamin A/C antibody (rAb)	IF, WB	91189
LAP2 alpha antibody (mAb)	WB	39267
LexA DNA-binding Domain antibody (pAb)	ChIP, WB	39184
LIN28A antibody (pAb)	ICC, IF, WB	61191
LSD1 / KDM1A antibody (pAb)	ChIP, IP, WB	39186
LXR-α antibody (pAb)	ChIP, ChIP-Seq, WB	61175
LXR-β antibody (pAb)	ChIP, ChIP-Seq, WB	61177
Histone macroH2A1 antibody (pAb)	ICC, IF, WB	39593
Histone macroH2A1.1 antibody (pAb)	ICC, IF, IHC, WB	39871
Histone macroH2A1.2 antibody (mAb)	ICC, IF, IHC, WB	61427

Antibody	Applications	Cat No.
Histone macroH2A2 antibody (pAb)	ICC, IF, IHC, WB	39873
MAD1 antibody (mAb)	ICC, IF	39659
MAD2L1 antibody (mAb)	WB	39399
MAF antibody (pAb)	WB	61635
MALT1 antibody (mAb)	WB	39395
MASH1 antibody (mAb)	IHC, WB	61271
MAX antibody (rAb)	WB	91641
MAZ antibody (mAb)	ChIP, EMSA, WB	39935
AbFlex® MAZ antibody (rAb)	WB	91205
MAZ antibody (rAb)	IHC	91643
MBD1 antibody (mAb)	WB	39215
MBD1 antibody (pAb)	WB	39857
MBD2 antibody (pAb)	WB	39547
MBD3 antibody (mAb)	WB	39216
MCM2 antibody (pAb)	WB	61717
5-mCpA antibody (mAb)	DB	61783
MeCP2 antibody (mAb)	ChIP, ICC, IF, IHC, IP, WB	61291
MeCP2 phospho Ser80 antibody (pAb)	WB	39733
MED1 antibody (pAb)	IP, WB	61065
MED15 antibody (pAb)	IP, WB	61589
MEIS 1/2/3 antibody (mAb)	ICC, IF	39795
AbFlex® MEIS 1/2/3 antibody (rAb)	WB	91259
Menin antibody (pAb)	ChIP, ChIP-Seq, WB	61005
MEP50 antibody (pAb)	WB	39190
5-Methylcytosine (5-mC) antibody (mAb)	DB, IF, MeDIP	61479
3-Methylcytosine (3-mC) antibody (pAb)	DB, ICC, IF	61111
3-Methylcytosine (3-mC) antibody (pAb)	DB, ICC, IF	61179
AbFlex® 5-methylcytosine antibody (rAb)	DB	91187
METTL14 antibody (pAb)	IP, WB	65746
METTL14 antibody (rAb)	IHC, WB	91645
METTL16 antibody (pAb)	WB	65740
METTL3 antibody (mAb)	IP, WB	65687
AbFlex® METTL3 antibody (rAb)		91333
METTL3 antibody (rAb)	WB	91647
MGMT antibody (pAb)	IP, WB	39951
Mi-2 antibody (mAb)	IF, IP, WB	61463
AbFlex® Mi-2 beta (CHD4) antibody (rAb)	WB	91275
Mi-2 beta antibody (mAb)	WB	39695
Mili / PiwiL2 antibody (mAb)	ICC, IF, IP, WB	61143
AbFlex® Mili / PiwiL2 antibody (rAb)	WB	91253
MINA antibody (pAb)	WB	61713
MiTF antibody (mAb)	ChIP, ChIP-Seq, EMSA, ICC, IF, IP, WB	39789
AbFlex® MiTF antibody (rAb)	ChIP-Seq	91201
MLL / HRX antibody (mAb)	ChIP, IP, WB	39829
MLL / HRX antibody (pAb)	ChIP, ChIP-Seq, ICC, IF, IP, WB	61295
MLLT1 antibody (rAb)	WB	91649

The lists above are a small subset of our antibodies, we also offer each in a **convenient sample size**.

For an up-to-date list of all available antibodies, please visit activemotif.com/abs.

Antibody	Applications	Cat No.
MMSET / WHSC1 antibody (mAb)	ICC, IF, WB	39879
MOF / MYST1 antibody (pAb)	ChIP, ICC, IF, WB	61245
MRG15 antibody (pAb)	WB	39361
MSH3 antibody (rAb)	WB	91653
MTA2 antibody (pAb)	WB	39359
MYCL1 antibody (rAb)		91657
Myc-Tag antibody (mAb)	WB	39279
AbFlex® Myc-Tag antibody (rAb)	WB	91203
Myf-5 antibody (mAb)	ICC, IF, WB	39801
MyoD antibody (mAb)	ICC, IF, WB	39991
N6-Methyladenosine (m6A) antibody (mAb)	DB, IP	61755
N6-Methyladenosine (m6A) antibody (pAb)	DB	61495
AbFlex® N6-Methyladenosine (m6A) antibody (rAb)	DB, IP	91261
Nanog antibody (mAb)	ICC, IF, WB	61627
Nanog antibody (pAb)	ChIP, ChIP-Seq, ICC, IF, WB	61419
AbFlex® Nanog antibody (rAb)	WB	91251
Nap1 antibody (pAb)	IF, WB	39577
NAT10 antibody (pAb)	WB	65703
NAT10 antibody (rAb)	WB	91659
NCAPH2 antibody (mAb)	ICC, IF, WB	61681
NCOA1 antibody (pAb)	WB	61653
NCoA4 / ELE1 antibody (pAb)	WB	39895
NEDD4 antibody (rAb)	WB	91661
NF-1A antibody (pAb)	ICC, IF, IHC, WB	39397
NFATC2 antibody (pAb)	IP, WB	61621
NFX1 antibody (rAb)	WB	91663
NFκB p100 antibody (pAb)	WB	39687
NFκB p65 antibody (mAb)	ChIP, WB	40916
NFκB p65 antibody (pAb)	WB	39283
NFκB p65 antibody (pAb)	ChIP, ChIP-Seq, EMSA, WB	39369
NFκB p65 antibody (rAb)	WB	91665
NFκB p65 phospho Ser468 (rAb)	WB	91689
NFκB p65 phospho Ser529 antibody (pAb)	WB	39691
NFκB p65 phospho Ser536 antibody (pAb)	WB	39675
NKX2.5 antibody (pAb)	WB	61267
N-Myc antibody (pAb)	ChIP-Seq, WB	61185
NonO antibody (pAb)	IP, WB	61247
Notch1 antibody (mAb)	WB	61147
AbFlex® Notch1 antibody (rAb)	WB	91243
NR1H4 antibody (rAb)	WB	91667
NR3C1 antibody (pAb)	WB	61519
NR3C1 antibody (rAb)	IHC, WB	91611
NRAS antibody (pAb)	WB	65744
AbFlex® NRAS antibody (rAb)	DB, WB	91429
NRF1 antibody (pAb)	WB	61673
NRF1 antibody (rAb)	WB	91669

Antibody	Applications	Cat No.
NRF2 antibody (pAb)	ChIP, ChIP-Seq, WB	61599
NRF2 antibody (rAb)	WB	91671
NSUN2 antibody (pAb)	WB	65748
Nucleolin antibody (mAb)	ICC, IF, WB	39541
AbFlex® Nucleolin antibody (rAb)	WB	91231
Nucleophosmin antibody (pAb)	WB	39849
Oct-4 antibody (pAb)	ChIP, ChIP-Seq, ICC, IF, WB	39811
OGA/O-GlcNAcase antibody (pAb)	IP, WB	61425
O-GlcNAc antibody (mAb)	ChIP-Seq, IP, WB	61453
OGT/O-GlcNAc transferase antibody (pAb)	ChIP, ChIP-Seq, WB	61355
Osteoprotegerin (OPG) antibody (mAb)	WB	40938
P21 antibody (rAb)	WB	91673
p300 antibody (mAb)	ChIP, ChIP-Seq, ICC, IF, IP, WB	61401
p300 antibody (rAb)	IP	91675
p53 antibody (mAb)	ChIP, IP, WB	39553
p53 antibody (pAb)	WB	61657
AbFlex® p53 antibody (rAb)	WB	91247
P53 antibody (rAb)	WB	91677
P53 phospho Ser15 (rAb)	WB	91691
P62 antibody (rAb)	WB	91679
PAF1 antibody (pAb)	WB	61567
PARP-1 C-terminal antibody (pAb)	ChIP, ChIP-Seq, WB	39561
PARP-1 N-terminal antibody (pAb)	ChIP, WB	39559
PARP-1 N-terminal antibody (pAb)	ChIP-Seq, CUT&Tag, IP, WB	61639
PAX5 antibody (pAb)	WB	61565
PAX6 antibody (pAb)	WB	61611
PAX7 antibody (mAb)	ICC, IF, WB	39803
PAX9 antibody (mAb)	IHC, WB	61077
PBRM1 antibody (pAb)	ChIP-Seq, WB	61381
PBX1b antibody (mAb)	ChIP, IHC, WB	61165
PCIF1/CAPAM antibody (pAb)	IP, WB	65711
PCL2 antibody (mAb)	WB	61153
PCL2 antibody (rAb)	WB	91655
PDX1 antibody (pAb)	WB	61289
PGC1-β antibody (pAb)	WB	39859
Phc1 antibody (mAb)	ICC, IF, IP, WB	39723
AbFlex® PHD2 (EGLN1) antibody (rAb)	IF, IP, WB	91445
PHF20 antibody (pAb)	WB	61123
PHF6 antibody (pAb)	WB	61807
PHF8 antibody (pAb)	WB	39711
Phf1 / Histone H2A.Z antibody (pAb)	WB	39640
Phf1 / Histone H2A.Zac (pan-acetyl) antibody (pAb)	DB, WB	39642
PIAS1 antibody (rAb)	IHC, WB	91703
PIM2 antibody (mAb)	IHC, WB	61159
AbFlex® Pim2 antibody (rAb)	WB	91239
PITX2 antibody (pAb)	WB	61303

The lists above are a small subset of our antibodies, we also offer each in a **convenient sample size**.

For an up-to-date list of all available antibodies, please visit activemotif.com/abs.

Antibody	Applications	Cat No.
PKC-B antibody (pAb)	WB	61733
PLZF antibody (mAb)	ChIP, ICC, IF, IP, WB	39987
POLR2B antibody (pAb)	IP, WB	61557
POU4F3 antibody (rAb)	WB	91705
PP2A antibody (pAb)	ChIP, WB	39192
PPAR γ antibody (rAb)	WB	91707
PPM1D antibody (pAb)	WB	61591
PRDM1 / BLIMP1 antibody (mAb)	IHC, IP, WB	61167
AbFlex [®] PRMT1 antibody (rAb)	ChIP-Seq, IF, IP, WB	91453
AbFlex [®] PRMT1 antibody (rAb)	ChIP-Seq, IF, WB	91455
PRMT2 antibody (pAb)	ICC, IF, WB	61491
PRMT5 antibody (pAb)	ChIP-Seq, WB	61001
PRMT6 antibody (pAb)	IHC, WB	61003
Progerin antibody (mAb)	ICC, IF, WB	39965
Progesterone Receptor antibody (pAb)	WB	65750
Prox1 antibody (mAb)	IF, WB	61091
Prox1 antibody (mAb)	ICC, IF, IHC	61093
Prox1 antibody (rAb)	WB	91709
PTRF antibody (rAb)	WB	91711
PXR antibody (pAb)	WB	39589
Rad21 antibody (mAb)	ICC, IF, WB	39383
AbFlex [®] Rad21 antibody (rAb)	IF, WB	91245
Rad51 antibody (pAb)	ICC, IF	39194
RAN antibody (rAb)	WB	91713
RAR- α antibody (mAb)	EMSA, IHC, WB	39971
RAR- β antibody (mAb)	EMSA, IHC, WB	61027
RAR- γ antibody (mAb)	EMSA, IHC, WB	39973
RB1 antibody (pAb)	IP, WB	61585
RbAp46/48 antibody (pAb)	ChIP, WB	39198
RBBP5 antibody (pAb)	ChIP, ChIP-Seq, WB	61405
RBM39 antibody (pAb)	WB	61669
RBPJ antibody (mAb)	WB	61073
RBPJ antibody (mAb)	ChIP, EMSA, ICC, IF	61505
RING1 antibody (pAb)	WB	61517
Ring1B antibody (mAb)	ChIP, ChIP-Seq, ICC, IF, IP, WB	39663
RNA pol II antibody (mAb)	ChIP, ChIP-Seq, ICC, IF, WB	39097
RNA pol II antibody (mAb)	ChIP, IF, IP, WB	61081
RNA pol II antibody (mAb)	ChIP, ChIP-Seq, ICC, IF, WB	61667
AbFlex [®] RNA Pol II antibody (rAb)	ChIP, ChIP-Seq, IF, WB	91151
RNA pol II CTD Cit1810 antibody (pAb)	DB, IP, WB	65720
RNA pol II CTD monomethyl Lys7 antibody (mAb)	ChIP, ChIP-Seq, IP, WB	65691
RNA pol II CTD phospho Ser2 antibody (mAb)	ChIP, ChIP-Seq, ICC, IF, IP, WB	61083
RNA pol II CTD phospho Ser2 antibody (mAb)	ICC, IF, WB	61699
RNA pol II CTD phospho Ser2 antibody (pAb)	IP, WB	39563
AbFlex [®] RNA pol II CTD phospho Ser2 antibody (rAb)	ChIP, ChIP-Seq, ELISA, ICC, IF, WB	91115
RNA pol II CTD phospho Ser5 antibody (mAb)	ChIP, ChIP-Seq, ICC, IF, IP, WB	61085

Antibody	Applications	Cat No.
RNA pol II CTD phospho Ser5 antibody (mAb)	ICC, IF, WB	61701
RNA pol II CTD phospho Ser5 antibody (pAb)	ChIP, ICC, IF, WB	39233
RNA pol II CTD phospho Ser5 antibody (pAb)	ChIP, ChIP-Seq, WB	39749
AbFlex [®] RNA pol II CTD phospho Ser5 antibody (rAb)	ChIP, ChIP-Seq, ELISA, ICC, IF, WB	91119
RNA pol II CTD phospho Ser7 antibody (mAb)	ChIP, ChIP-Seq, ICC, IF, IP, WB	61087
RNA pol II CTD phospho Ser7 antibody (mAb)	ICC, IF, WB	61703
RNA pol II CTD phospho Thr4 antibody (mAb)	ChIP, DB, ELISA, ICC, IF, IP, WB	61361
RNA pol II CTD phospho Thr4 antibody (pAb)	WB	61307
RNA pol II CTD phospho Tyr1 antibody (mAb)	ChIP, ICC, IF, IP, WB	61383
AbFlex [®] RNA Pol II CTD phospho Tyr1 antibody (rAb)	ChIP-Seq, ELISA, IF, WB	91219
RNA pol II CTD Ser2ph / Ser5ph antibody (mAb)	ChIP, ChIP-Seq, ICC, IF, WB	61665
RORA antibody (rAb)	WB	91715
RUNX2 antibody (rAb)	WB	91717
RXR- γ antibody (mAb)	EMSA, IHC, WB	61033
RYBP antibody (pAb)	WB	61461
SaCas9 antibody (mAb)	WB	61787
AbFlex [®] SaCas9 antibody (rAb)	WB	91279
SALL4 antibody (pAb)	IP, WB	39957
SALL4 antibody (rAb)		91719
SAP30 antibody (pAb)	ChIP, ChIP-Seq, WB	39731
SARS-CoV-2 Spike Antibody (AM001414)	ELISA, NEU	91361
SARS-CoV-2 Spike Antibody (AM002413)	ELISA	91379
SARS-CoV-2 Spike Antibody (AM002414)	ELISA, NEU	91349
SARS-CoV-2 Spike Antibody (AM004414)	ELISA, WB	91345
SARS-CoV-2 Spike Antibody (AM005415)	ELISA	91347
SARS-CoV-2 Spike Antibody (AM005505)	ELISA	91383
SARS-CoV-2 Spike Antibody (AM006415)	ELISA	91351
SARS-CoV-2 Spike Antibody (AM009105)	ELISA	91337
SARS-CoV-2 Spike Antibody (AM015553)	ELISA, NEU	91377
SARS-CoV-2 Spike Antibody (AM017553)	ELISA	91387
SARS-CoV-2 Spike Antibody (AM018553)	ELISA	91389
SARS-CoV-2 Spike Antibody (AM020553)	ELISA	91381
SARS-CoV-2 Spike Antibody (AM027553)	ELISA	91391
SARS-CoV-2 Spike Antibody (AM032414)	ELISA	91359
SARS-CoV-2 Spike Antibody (AM038105)	ELISA	91339
SARS-CoV-2 Spike Antibody (AM043105)	ELISA	91341
SARS-CoV-2 Spike Antibody (AM063553)	ELISA	91393
AbFlex [®] SARS-CoV-2 Spike Antibody (rAb) (AM001414)	ELISA, NEU	91375
AbFlex [®] SARS-CoV-2 Spike Antibody (rAb) (AM002414)	ELISA, NEU	91363
AbFlex [®] SARS-CoV-2 Spike Antibody (rAb) (AM004414)	ELISA	91373
AbFlex [®] SARS-CoV-2 Spike Antibody (rAb) (AM009105)	ELISA	91365
AbFlex [®] SARS-CoV-2 Spike Antibody (rAb) (AM038105)	ELISA	91371
AbFlex [®] SARS-CoV-2 Spike Antibody (rAb) (AM043105)	ELISA	91367
SARS-CoV-2 Spike IgG/IgM Antibody (AM043105)	ELISA	91385
SATB1 antibody (pAb)	WB	39839
SATB2 antibody (pAb)	WB	61575

The lists above are a small subset of our antibodies, we also offer each in a **convenient sample size**.

For an up-to-date list of all available antibodies, please visit activemotif.com/abs.

Antibody	Applications	Cat No.
SET8 / PR-SET7 antibody (pAb)	WB	61009
SETD7 / SET7 antibody (pAb)	WB	61451
SFMBT1 antibody (pAb)	ChIP, ChIP-Seq, IF, IP, WB	61759
SIN3A antibody (pAb)	ChIP, WB	39865
SIP1 antibody (mAb)	ICC, IF, IHC, WB	61095
SIP1 antibody (pAb)	WB	61113
SIRT1 antibody (mAb)	ICC, IF, IP, WB	39353
SIRT2 antibody (pAb)	IP, WB	39903
SIRT2 antibody (pAb)	ICC, IF, WB	61043
SIRT2 antibody (pAb)	ICC, IF, WB	61045
SIRT2 phospho Ser331 antibody (mAb)	WB	61363
SIRT3 antibody (rAb)	WB	91761
SIRT5 antibody (rAb)	WB	91721
SIRT6 antibody (pAb)	IP, WB	39911
SMAD1 phospho Ser195 (rAb)	WB	91693
SMAD1 phospho Ser214 (rAb)	WB	91695
SMAD3 antibody (pAb)	WB	61249
SMAD4 antibody (pAb)	IP, WB	61631
SMAD4 antibody (rAb)	WB	91723
SMARCA1 / SNF2L1 antibody (mAb)	IHC, WB	61465
AbFlex® SMARCA1 / SNF2L1 antibody (rAb)	WB	91225
SMARCA2 / BRM antibody (mAb)	ChIP, ICC, IF, WB	39805
SMARCA4 / BRG1 antibody (mAb)	ICC, IF, WB	39807
SMARCA4 antibody (mAb)	ICC, IF, WB	61625
SMARCA1 / HARP antibody (mAb)	IP, WB	61115
SMARCB1 antibody (mAb)	ICC, IF, WB	61649
SMARCC1 / BAF155 antibody (pAb)	ICC, IF, WB	61409
SMARCC2 / BAF170 antibody (pAb)	ICC, IF, WB	61471
SMARCE1 antibody (pAb)	WB	61581
SMC1 phospho Ser957 antibody (pAb)	WB	39631
SMC1-α antibody (pAb)	ChIP-Seq, IP, WB	61067
SMC3 antibody (pAb)	WB	61131
SMC3 K105acK106ac antibody (mAb)	WB	65728
SMC4 antibody (pAb)	IP, WB	61129
SMRT / NCoR2 antibody (mAb)	WB	61105
SMRT / NCoR2 antibody (pAb)	WB	39845
Smyd3 antibody (pAb)	IHC, WB	61407
SNAI1 / Snail antibody (mAb)	IHC, WB	61367
SNAI1 antibody (rAb)	WB	91725
AbFlex® Snail antibody (rAb)	WB	91255
SND1 antibody (mAb)	ICC, IF, IHC, IP, WB	61473
SNIP1 antibody (rAb)	WB	91727
Sox11 antibody (pAb)	WB	61181
Sox2 antibody (pAb)	ICC, IF, IHC, WB	39823
Sox2 antibody (pAb)	ChIP, ChIP-Seq, ICC, IF, WB	39843
SOX2 antibody (rAb)		91729

Antibody	Applications	Cat No.
SOX6 antibody (pAb)	WB	61749
Sp1 non-phospho antibody (pAb)	WB	39809
Sp1 phospho Ser101 antibody (pAb)	WB	39757
SREBP-1 antibody (mAb)	ChIP, EMSA, IP, WB	39939
SREBP-2 antibody (mAb)	WB	39941
SRF antibody (mAb)	ChIP, ChIP-Seq, IF, IHC, WB	61385
STAG1 antibody (pAb)	WB	61561
STAT1 phospho Ser727 antibody (pAb)	DB, WB	39633
STAT1 phospho Tyr701 (rAb)	WB	91697
STAT2 antibody (pAb)	IP, WB	61651
STAT2 phospho Tyr689 antibody (pAb)	DB, WB	39611
STAT3 antibody (pAb)	WB	61645
STAT3 antibody (rAb)	WB	91731
STAT3 phospho Ser727 antibody (pAb)	DB, WB	39613
STAT3 phospho Tyr705 antibody (pAb)	DB, WB	39595
STAT5A antibody (pAb)	IP, WB	61133
STAT5A/B phospho Ser726/Ser731 antibody (pAb)	DB, WB	39597
STAT5A/B phospho Tyr694/Tyr699 (rAb)	WB	91699
STAT5A/B phospho Tyr694/Tyr699 antibody (pAb)	DB, WB	39617
STAT6 antibody (rAb)	IHC, WB	91733
Supt16H / Spt16 antibody (pAb)	WB	61441
Supt5H/SPT5 antibody (mAb)	ChIP-Seq, IP, WB	65689
AbFlex® Supt5H/SPT5 antibody (rAb)	IP, WB	91331
SUV39H1 antibody (mAb)	ChIP, ICC, IF, IP, WB	39785
Suz12 antibody (mAb)	ChIP, IHC, IP	39877
Suz12 antibody (pAb)	ChIP, ChIP-Seq, CUT&RUN, IF, WB	39357
AbFlex® Suz12 antibody (rAb)	IP	91163
TAB2 antibody (rAb)	WB	91763
TARDBP (C-terminal) (rAb)	IHC, WB	91737
TARDBP antibody (rAb)	WB	91735
TAZ / WWTR1 antibody (pAb)	WB	61265
TBK1 antibody (mAb)	WB	40909
TCF4 antibody (pAb)	WB	61609
TCF7 antibody (pAb)	WB	61579
TCF7L1 / TCF3 antibody (pAb)	ChIP, ChIP-Seq, WB	61125
TDG / Thymine-DNA glycosylase antibody (pAb)	WB	61437
TDP43 phospho Ser409/410 antibody (rAb)	WB	91701
TEAD1 antibody (pAb)	WB	61643
Tet1 antibody (mAb)	ChIP-Seq, ICC, IF, IP, WB	61741
Tet1 antibody (pAb)	ChIP, ChIP-Seq, IHC, WB	61443
AbFlex® TET1 antibody (rAb)	ChIP-Seq	91171
Tet2 antibody (mAb)	ICC, IF, IP, WB	61389
Tet3 antibody (mAb)	ICC, IF, IP, WB	61743
Tet3 antibody (pAb)	ChIP, WB	61395
TFAP4 antibody (rAb)	WB	91739
TIEG1 / KLF10 antibody (pAb)	WB	61117

The lists above are a small subset of our antibodies, we also offer each in a **convenient sample size**.

For an up-to-date list of all available antibodies, please visit activemotif.com/abs.

Antibody	Applications	Cat No.
TNF antibody (mAb)	ELISA	61601
TOP2A antibody (rAb)	WB	91741
TORC2 antibody (pAb)	IP, WB	39779
TRIM37 antibody (pAb)	WB	61747
TROY/TAJ antibody (pAb)	WB	40937
TRPS1 antibody (rAb)	WB	91743
TWIST antibody (mAb)	ICC, IF, IHC, WB	61097
AbFlex® TWIST antibody (rAb)	ChIP, ChIP-Seq, WB	91323
UBE2S antibody (rAb)	IHC, WB	91745
Ubiquitin antibody (mAb)	WB	39741
AbFlex® Ubiquitin antibody (rAb)	WB	91257
Ubiquitin antibody (rAb)	IHC, WB	91747
Ubrn1 antibody (pAb)	WB	39869
Uhrf1 antibody (pAb)	WB	39625
UTF1 antibody (pAb)	WB	61253
VCP antibody (rAb)	WB	91749
WDR4 antibody (pAb)	WB	65113
WDR5 antibody (pAb)	ChIP, WB	61485
WRN antibody (mAb)	ICC, IF, IHC, WB	61169
WT1 antibody (rAb)	IHC, WB	91751
XRCC1 antibody (pAb)	ICC, IF, WB	61371
YAP1 antibody (pAb)	IP, WB	61293
AbFlex® YTHDC1 antibody (rAb)	IF, IP, WB	91449
YTHDF1 antibody (pAb)	IP, WB	65736
YTHDF2 antibody (pAb)	WB	65738
YTHDF2 antibody (rAb)	WB	91753
YY1 antibody (pAb)	ChIP-Seq, CUT&Tag, IHC, IP, WB	61779
YY1 antibody (rAb)	WB	91755
ZEB1 antibody (pAb)	IP, WB	61119



For a full list of our antibodies visit
[activemotif.com/abs](https://www.activemotif.com/abs)

Take advantage of Active Motif Epigenetics Resources!



Epigenetics 101: Complete Guide to Understanding Epigenetics

Take a deep dive into epigenetics in our comprehensive learning center.



Epigenetics Blog

Follow our posts about the latest trends in epigenetics research.



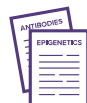
eBooks

Stay up to date with the latest eBooks from our epigenetics experts.



Scientific Posters

Download from a collection of our scientific posters.



Product Literature

Download educational guides, product brochures, and references lists.



Publications

Search publications that have used our products and services.



Webinars

Watch the latest tips and techniques from our epigenetics experts.



Videos

Browse our video collection and become an epigenetics expert.



Chromatin Clubs & Epigenetics Events

Keep connected to the epigenetics research community with chromatin clubs, online seminars, virtual conferences, and more epigenetics events.

The lists above are a small subset of our antibodies, we also offer each in a **convenient sample size**.
For an up-to-date list of all available antibodies, please visit [activemotif.com/abs](https://www.activemotif.com/abs).

North America

Toll Free: 877 222 9543
Direct: 760 431 1263
Fax: 760 431 1351
E-mail: tech_service@activemotif.com

Japan

Direct: +81 (0)3 5225 3638
Fax: +81 (0)3 5261 8733
E-mail: japantech@activemotif.com

Europe

Direct: +32 (0)2 653 0001
Fax: +32 (0)2 653 0050
E-mail: eurotech@activemotif.com

China

Direct: +86 21 20926090
Cell Phone: 18521362870
E-mail: techchina@activemotif.com

