

Chromeo™ 642 Goat anti-Mouse IgG

Catalog No: 15034, 15054

Format: 1 mg, 100 µg

Chemical Properties:

Contents: 1 mg (Catalog No. 15034) or 0.1 mg (Catalog No. 15054) of Chromeo™ 642 conjugated Goat anti-Mouse IgG (H+L). The antibody concentration is 2 mg/ml in 0.01 M potassium phosphate, 0.15 M sodium chloride pH 7.4, containing 2 mM sodium azide.

Specificity: This antibody was purified by immunoaffinity chromatography. It reacts with whole molecular mouse IgG and the light chains of other mouse immunoglobulins. No cross-reactivity with non-immunoglobulin serum proteins was observed.

Fluorescent Properties: Chromeo 642 is spectrally similar to Cy5®. The conjugated antibodies exhibit superior luminescent properties and stability towards photobleaching. Chromeo 642 conjugated antibodies have absorption and emission maxima of approximately 642 and 666 nm, which are compatible with common excitation sources and filter sets.

Molar extinction Coefficient: 180,000 M⁻¹cm⁻¹ (measured at A_{max})

Quantum Yield: ~7%

Excitation Wavelength Range: 630 to 655 nm

Emission Wavelength Range: 650 to 670 nm

Applications:

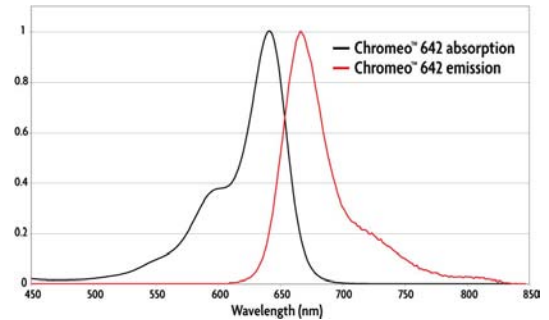
Immunofluorescence: 1:1000 to 1:2000 dilution

Plate-based assays: 1:800 to 1:1000 dilution

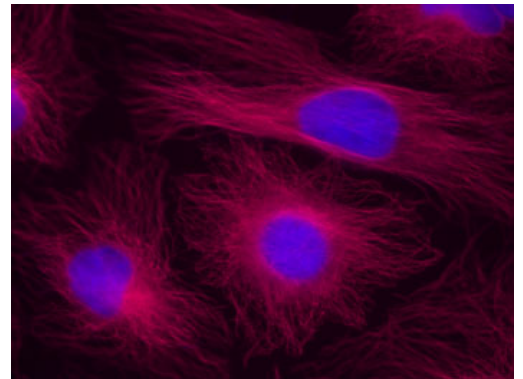
Quality Control: This antibody has been quality control-tested by spectrophotometrical evaluation, by immunohistochemistry (IHC) and by plate-based assays.

Storage and Guarantee: Some products may be shipped at room temperature. This will not affect their stability or performance. Upon receipt, unconjugated antibodies may be stored at -20°C for up to 2 years. Fluorophore- & enzyme-conjugated antibodies should be stored at 4°C. Fluorophore-conjugated antibodies should be protected from light. Keep reagents on ice when not in storage; to avoid repeated freeze/thaw cycles, we recommend aliquoting items that will be stored frozen into single-use fractions prior to freezing. This product is guaranteed for 6 months from date of receipt.

This product is for research use only and is not for use in diagnostic procedures



Absorption and emission spectra of Chromeo 642 Dye.



Chromeo 642 staining in HeLa cells.

HeLa cells were stained with alpha Tubulin mouse mAb (Clone 5-B-1-2; Cat. No. 39527) and Chromeo 642 Goat anti-mouse IgG. The nuclei have been counterstained with DAPI.